



Highly specified suites, apartments and penthouses rising 37 storeys.

Majority with spectacular views across the Capital's dramatic skyline.

Exclusive recreational & business facilities including 2 cinemas, The Stage bowling, games room, gymnasium, golf simulator, co-working suite and conference rooms.

THE STAGE

A DYNAMIC NEW LANDMARK FOR LONDON

Opulent 32nd level Sky Lounge & Terrace.

Bespoke residence and luxury lifestyle management by Rhodium.

Extensive retail and commercial space, pop-up units & converted Victorian viaducts featuring boutique retail.

Over one acre of new public piazza with performing arts pavilion and The Museum of Shakespeare.

THE
STAGE.
EC2
SHOREDITCH

THE STAGE

A WORLD HERITAGE SITE UNIQUE TO LONDON

The Stage is themed by the discovery and ongoing preservation of the remains of William Shakespeare's Curtain Theatre dating back to 1577.

This unique historical context heralds The Stage as the first World Heritage Site in East London, the remains of the theatre will be showcased in a purpose built Museum of Shakespeare located within the development's central public piazza.

THE
STAGE.
EC2
SHOREDITCH





5 minutes walk from Liverpool Street station. A major Zone 1 transport interchange with Elizabeth line, tube, mainline and overground services.

7 minutes journey time from Bond Street and the heart of London's West End.

Fast access to both the capital's financial powerhouse districts - The City and Canary Wharf.

THE STAGE

A WORLD CLASS CAPITAL ON YOUR DOORSTEP

Eleven of London's world leading universities will be within 15 minutes tube travel.

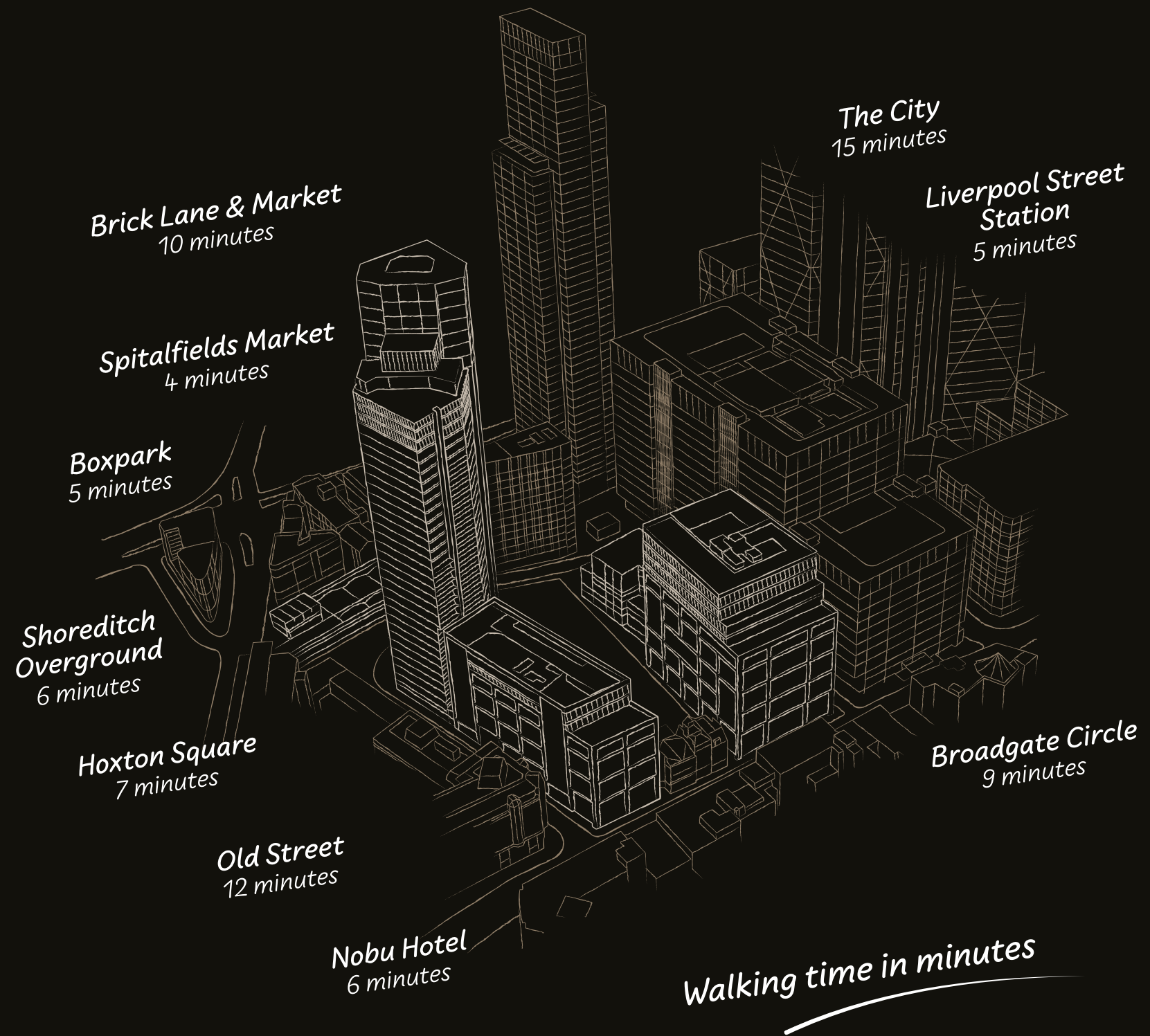
Shoreditch is now home to some of the capital's most celebrated restaurants, vibrant markets, nightlife and cultural landmarks.

THE
STAGE.
EC2
SHOREDITCH



THE
STAGE.
EC2

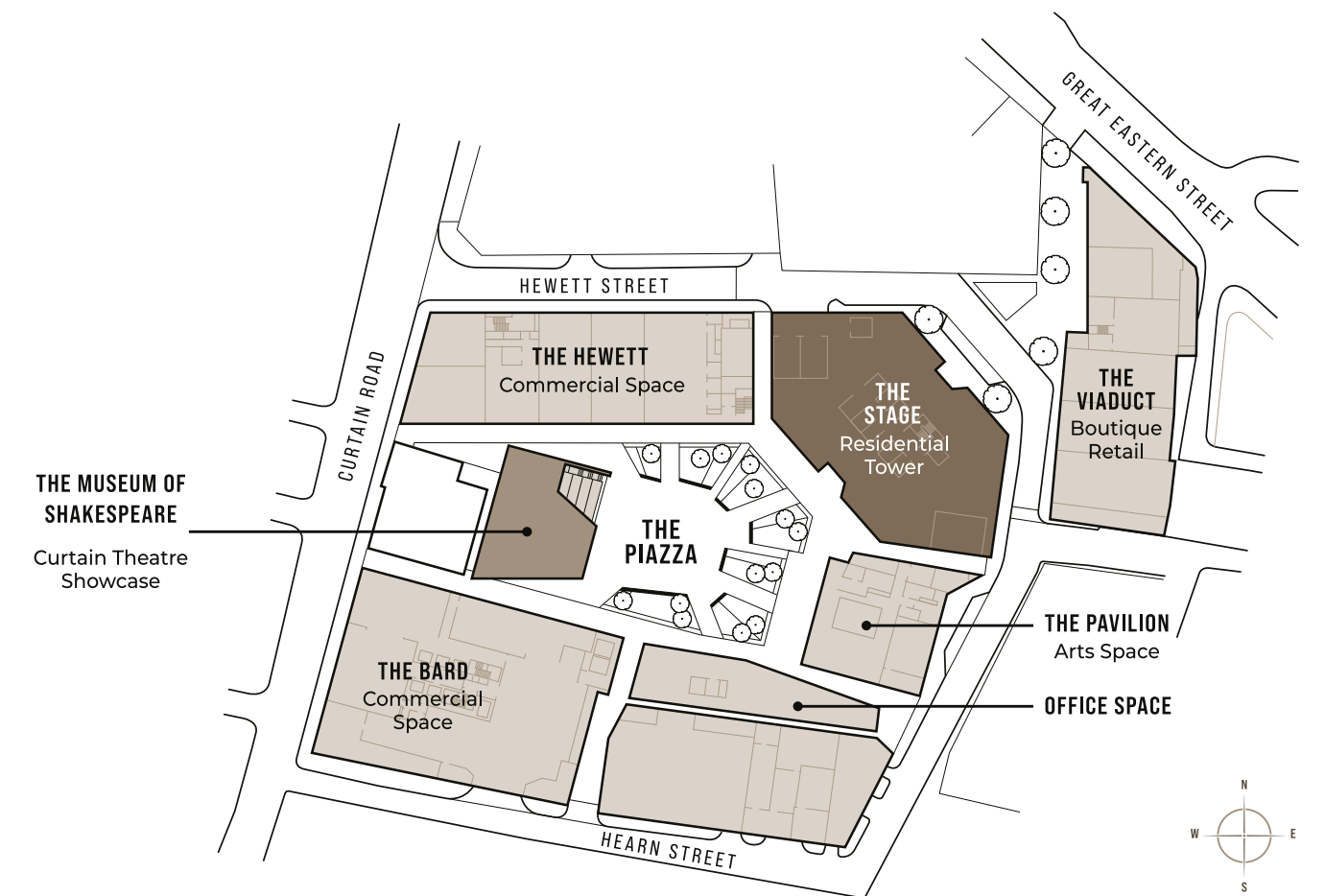
1200 metres from
the heart of the City
- the world's premier
financial district.





The preserved remains of the Curtain Theatre will be showcased in a purpose built Museum of Shakespeare located within the developments central piazza.

Computer generated image of The Museum of Shakespeare.



The 540,000 sq.ft development will provide one of the largest new public piazzas in London.

THE STAGE

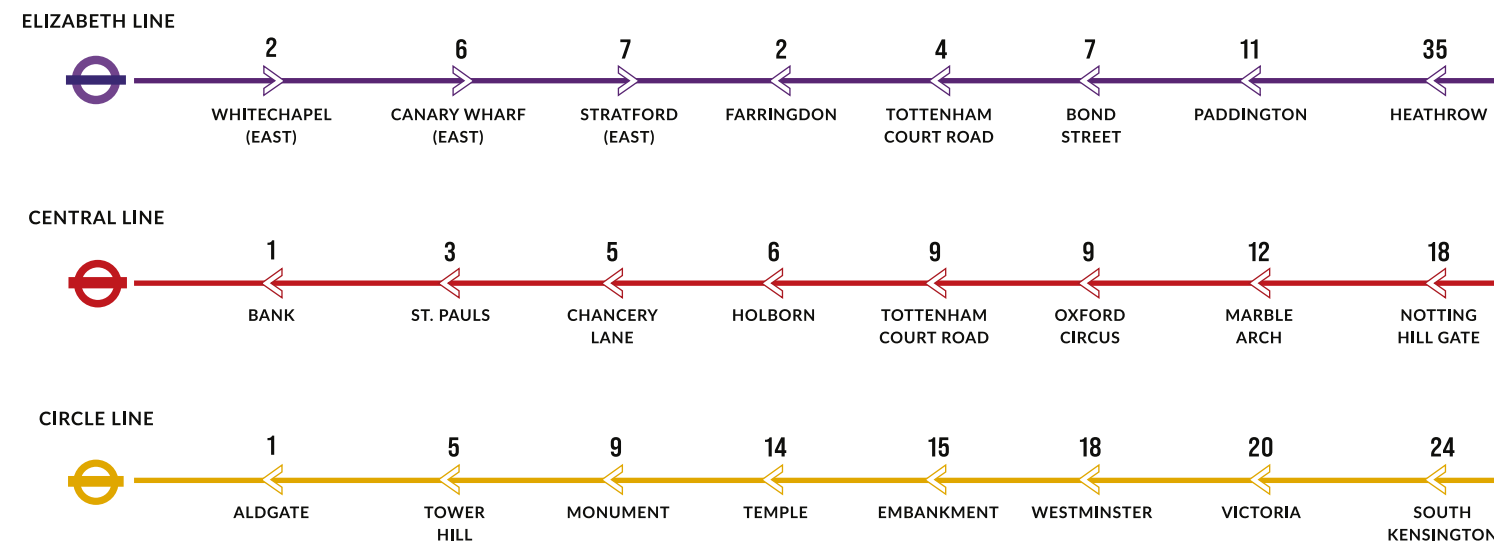
A NEW DESTINATION FOR LONDON



New public space includes a rooftop garden above converted Victorian viaducts.



Journey times from London Liverpool Street station



Average journey times source tfl.gov.uk and Crossrail.co.uk. Timelines may not show sequential stations but show journey times to key destinations.

Liverpool Street is served by 6 Zone 1 rail lines – 5 minutes walk from The Stage

Liverpool Street is one of the Capital's most central and largest Zone 1 transport hubs served by four tube lines, the Elizabeth Line and London Overground. The Station's services in turn, connect to London's entire transport network including Eurostar services from St. Pancras International. London City Airport is also within 25 minutes journey time.

CONNECT
WHEN MINUTES MATTER





Broadgate Circle

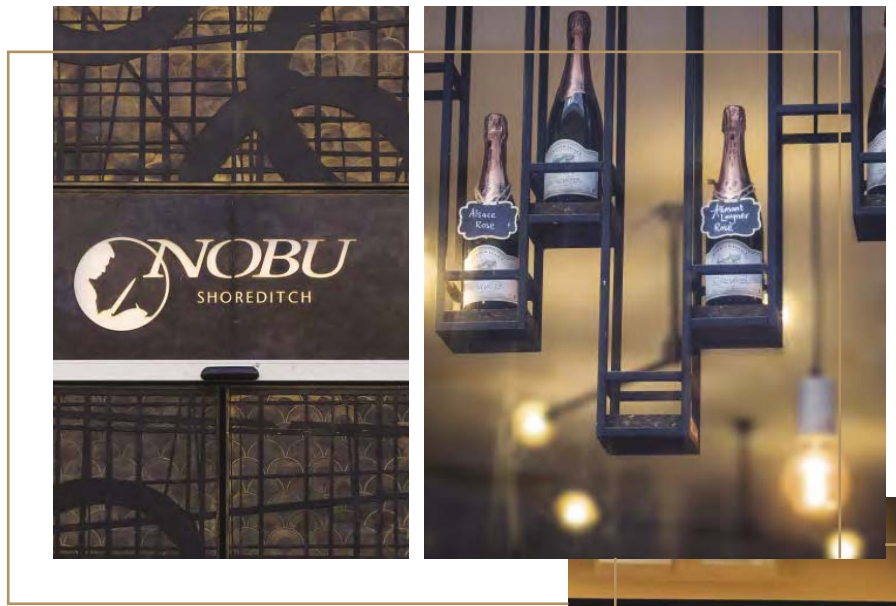


PHOTO COURTESY OF TOBY MITCHELL

Today, Shoreditch is a fusion of cultural and creative finesse, a neighbourhood alive with bustling markets, sleek cocktail lounges, vibrant basement bars and everything from gourmet street food to Michelin starred celebrity restaurants.

The Stage is perfectly placed for the array of exclusive establishments, cutting edge nightlife and tech commerce that define this dynamic district.

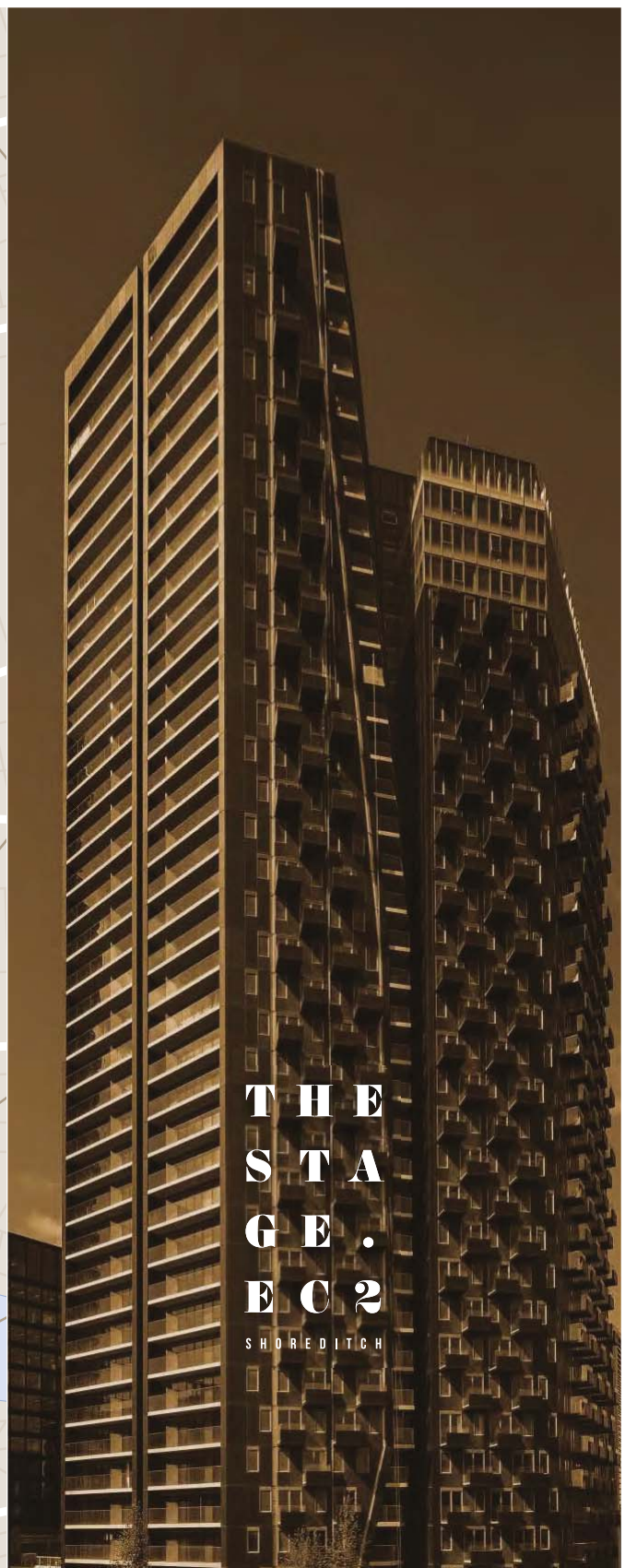
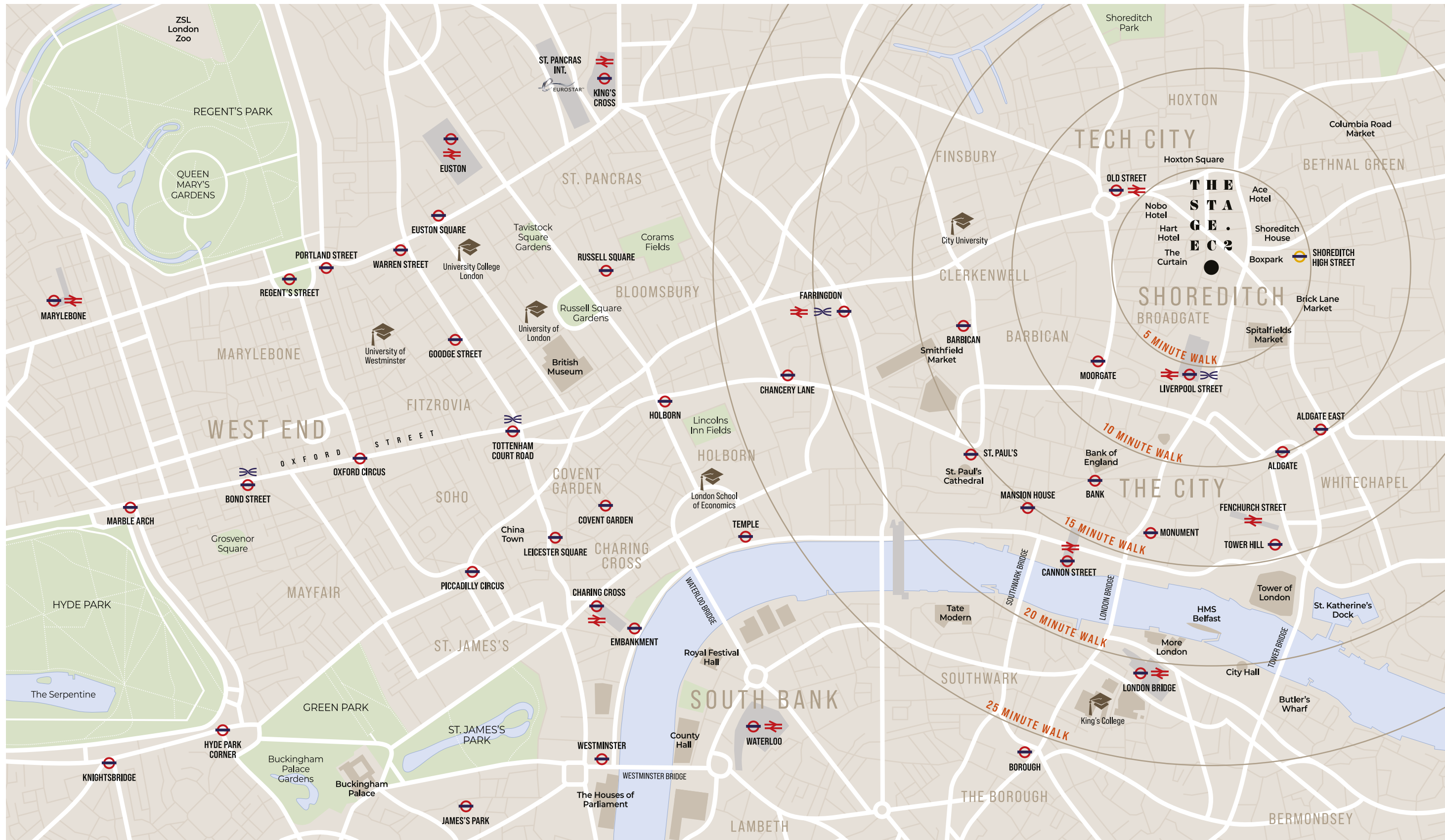


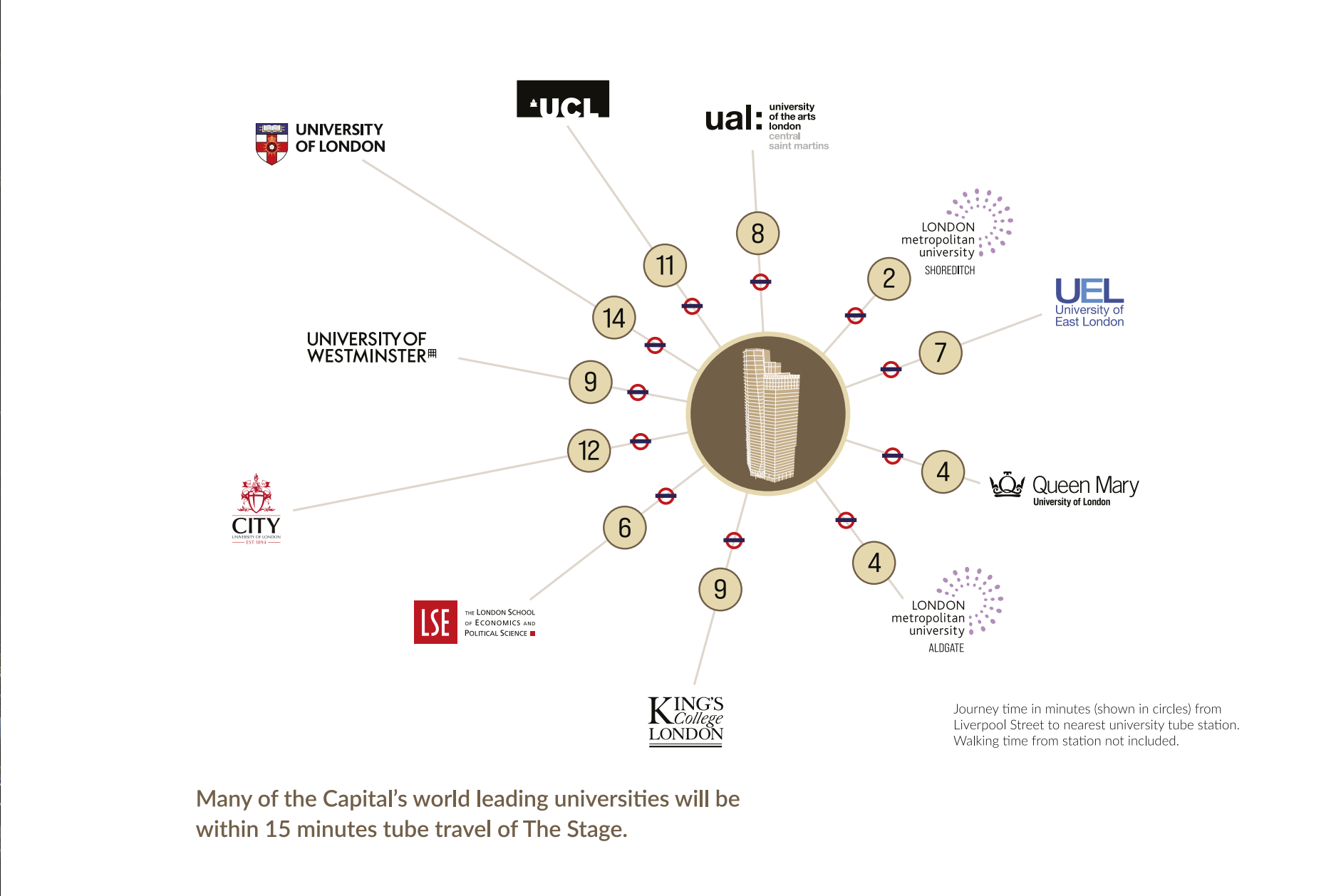
THE LOCALITY

SHOREDITCH – A DYNAMIC DISTRICT



Spitalfields Market





Many of the Capital's world leading universities will be within 15 minutes tube travel of The Stage.

LONDON
UNRIVALLED IN ACADEMIC EXCELLENCE





LSE has been ranked the top university in London for the 11th year running

Ranking by the Complete University Guide 2023.

There are 18 internationally ranked universities in the Capital with two, Imperial College London and University College London (UCL) being amongst the world's top 10.*

With London long recognised as the nerve centre of global academia, the Capital is seeing record numbers of international students choosing London as their study destination – with China having over 25,600 enrolled alone.

* Source: QS World University Rankings 2023.



Independent schools within convenient proximity include:

- The Lyceum School – EC2A
- City of London School for Girls – EC2Y
- Charterhouse Square School – EC1M
- Dallington School – EC1V
- St Paul's Cathedral School – EC4M
- City of London School – EC4V



MORE LONDON

LONDON BRIDGE QUARTER

THE SHARD & SHANGRI-LA HOTEL

BOROUGH MARKET

THE FINANCIAL HEART OF THE CITY

TATE MODERN

BIG BEN & HOUSES OF PARLIAMENT

SPITALFIELDS MARKET

BRICK LANE

BUCKINGHAM PALACE



LIVERPOOL STREET

AMAZON HEADQUARTERS

THE STAGE. EC2

BOND STREET

HYDE PARK

OXFORD STREET

BRITISH MUSEUM



THE
STAGE.
EC2
SHOREDITCH

AMENITIES & LEISURE



CONCIERGE RECEPTION

Enter the striking double height lobby and be greeted by a 24-hour concierge team run by the bespoke, prime-residential management team at Rhodium. Offerings, including elite booking services, personal shopping arrangements and event planning assistance, will ensure every level of deluxe living is taken care of at The Stage.

LEVEL 32

4,355 sq.ft Sky Lounge
Landscaped terrace

GROUND LEVEL

Double height entrance foyer
Concierge reception

LOWER LEVEL 1

Amenities lobby
3 conference rooms
Co-working suite
Cinema 1 – 18 seats
Cinema 2 – 15 seats

LOWER LEVEL 2

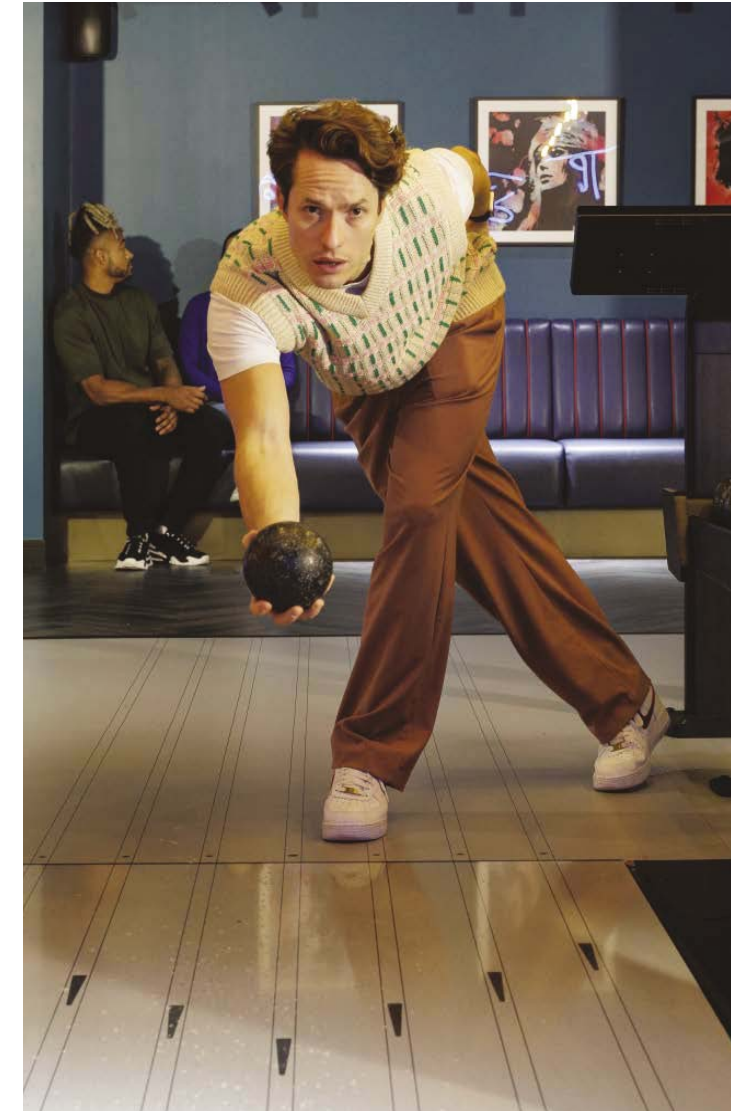
1,970 sq.ft gymnasium
Shower & locker facilities
Golf simulator
2,800 sq.ft The Stage Bowling with lounge area
Adjoining games room





THE STAGE BOWLING

The Stage offers some of London's finest resident lifestyle amenities including the fabulous Stage bowling alley complete with lounge area and adjoining games room.





GAMES ROOM

Residents are welcome to host private functions in this dynamic, fully equipped space with pool tables, a tennis table & air hockey.



GOLF SIMULATOR

Residents' private indoor golf simulator featuring state of the art audio visual technology.



CINEMAS

Enjoy your favourite film or sporting event in one of the two luxury screening rooms, both available for private hire.



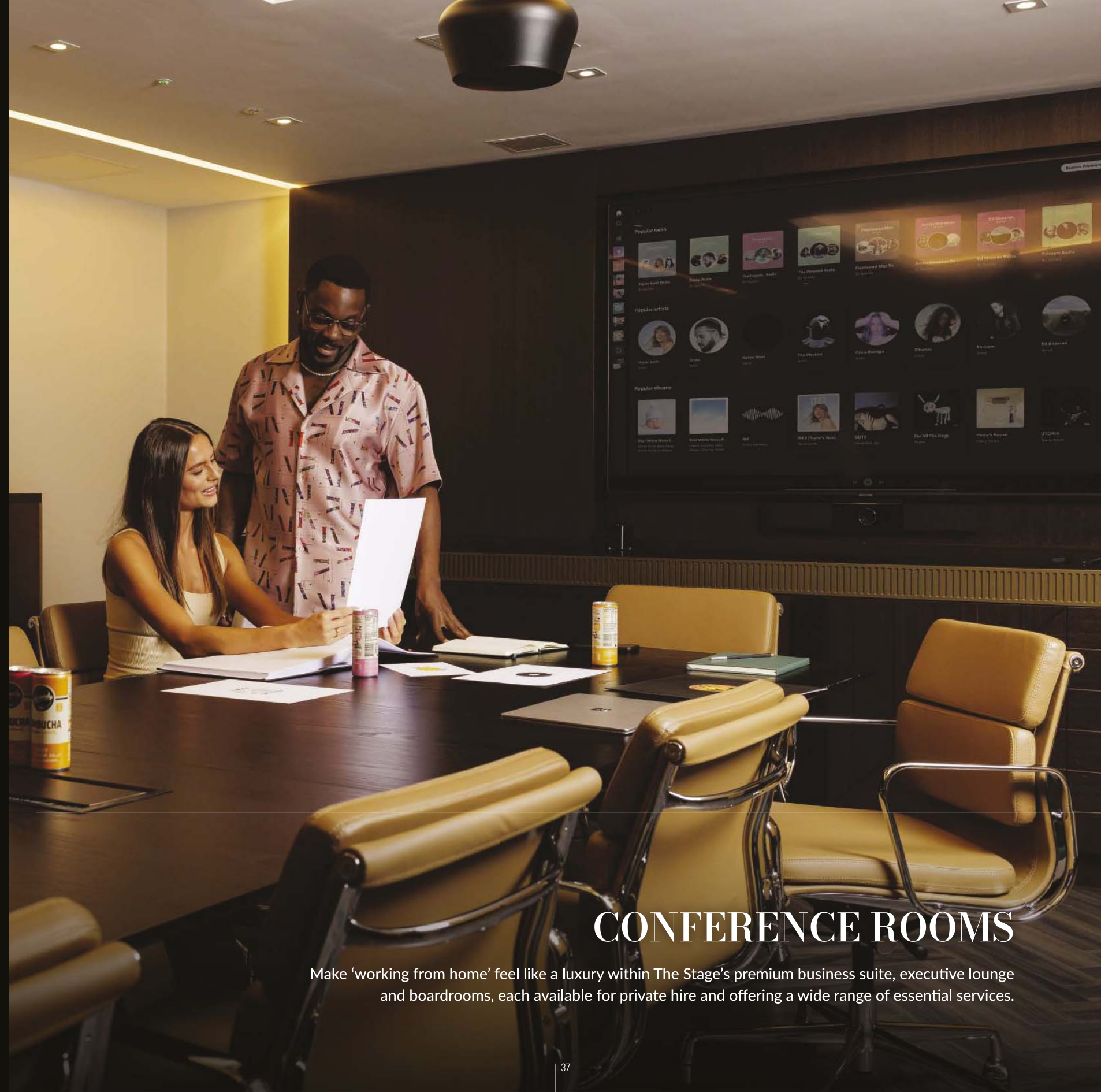
GYMNASIUM

Fit a workout into even the most hectic day in the residents' private gym featuring Matrix equipment.



CO-WORKING SUITE

Sumptuous space and surroundings to energise productivity while relaxing at the same time.



CONFERENCE ROOMS

Make 'working from home' feel like a luxury within The Stage's premium business suite, executive lounge and boardrooms, each available for private hire and offering a wide range of essential services.



SKY LOUNGE

Residents of The Stage have exclusive access to a one-of-a-kind rooftop sanctuary and entertaining venue at the development's very own indoor/outdoor Sky Lounge



SKY LOUNGE & TERRACE





THE
STAGE.
EC2
SHOREDITCH

THE APARTMENTS

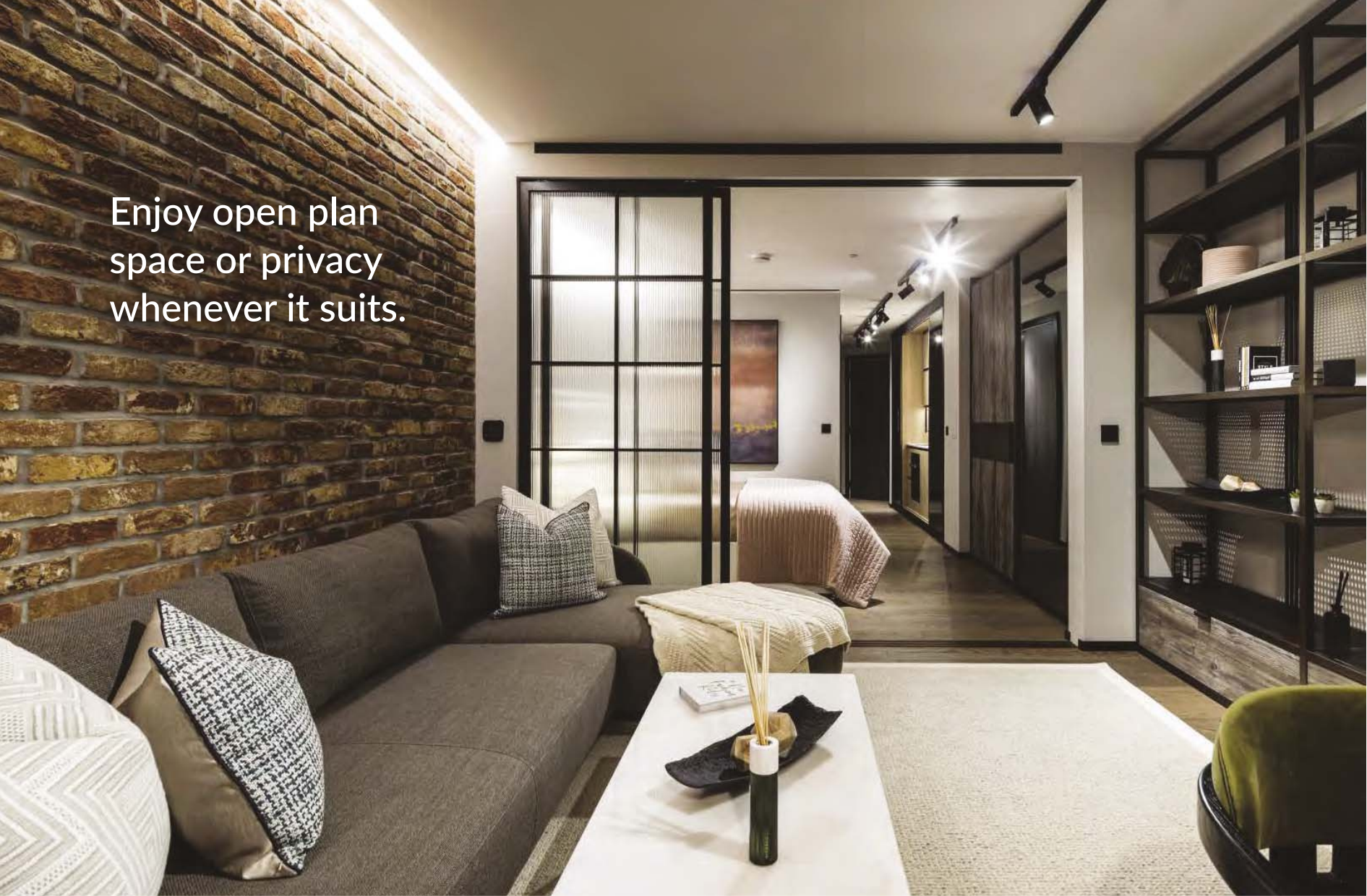
Example 1 bedroom suite
There are 65 suites in this style
arranged from level 2 up to level 25.
All suite types are between
421 and 504 sq.ft.



1 BEDROOM SUITES



Enjoy open plan space or privacy whenever it suits.

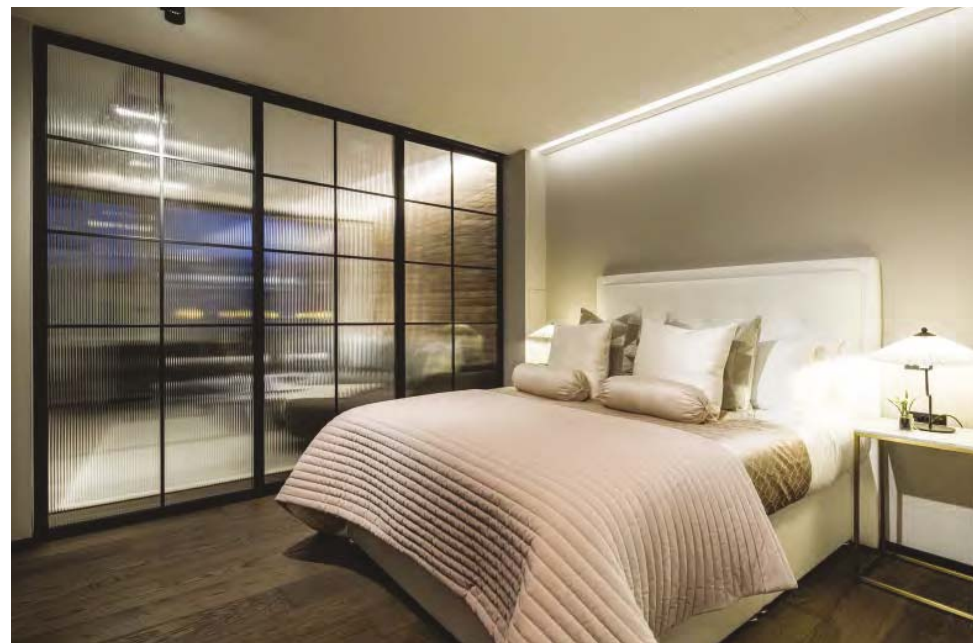
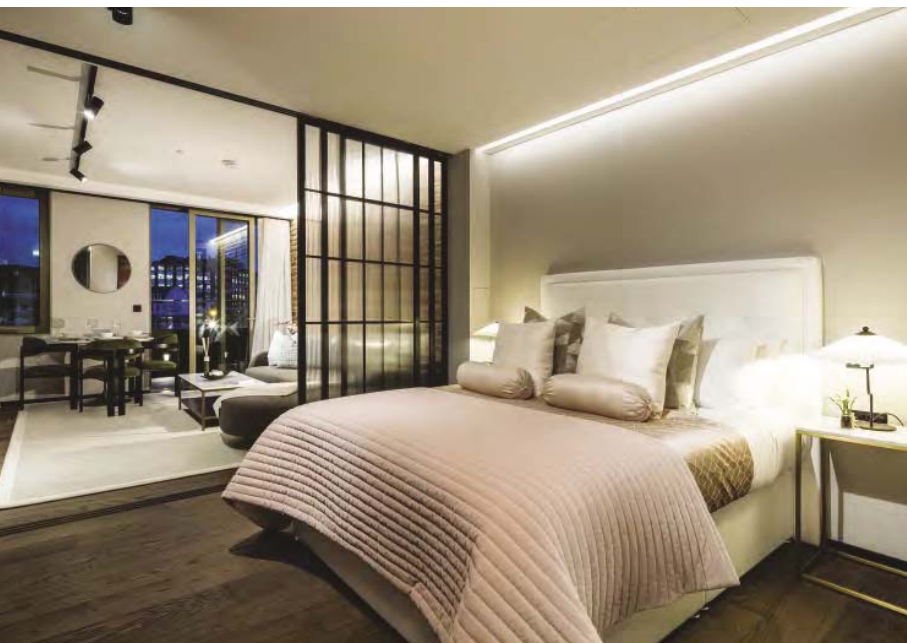


The Stage incorporates 149 fabulous 1 bedroom suites with each featuring stylish Crittall glass sliding screens forming a privacy partition between the living and bedroom area.

Suites offer living space from around 420 sq.ft to over 500 sq.ft with each having balcony access from the principal living room.

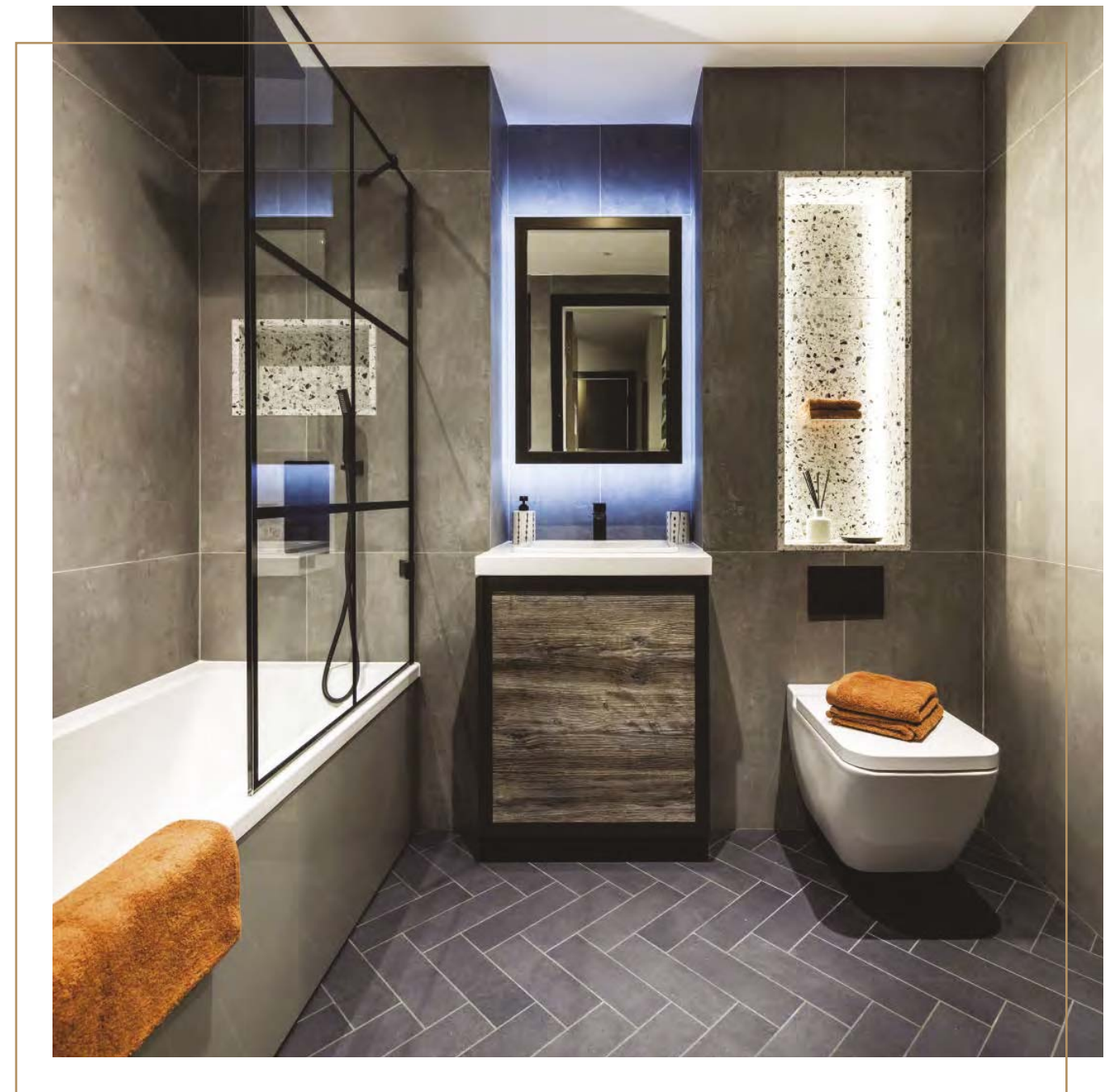
Suites have either open plan or concealed kitchen areas

Kitchen areas in a range of suites have innovative mirrored sliding screens enabling either functional use of the kitchen or to create a feature reflective wall space that forms part of the living area.





Shower and bathrooms incorporate black Crittall style screens and enclosures with finishes in a palette of Terrazzo, white stone, charcoal herringbone and antique bronze detailing with Tile Vision LED TV over the bath in the majority of suites and apartments.





Example 1 bedroom apartment

The Stage offers 24 of this apartment style with differing balcony configurations.

All 1 bedroom types are between 495 and 830 sq.ft.

1 BEDROOM APARTMENTS





Whatever your choice of apartment style at The Stage, specifications are exacting, refined and thoughtfully designed to provide a seamless blend of sleek chic appeal and functionality.

Each apartment has been designed to create a statement of urban elegance

The entire interior design palette of both apartments and communal areas has been initiated and inspired by internationally acclaimed designer Nicola Fontanella of Argent Design.



Each luxuriously appointed bath and shower room is finished in Valentina Urban large format porcelain/ceramic wall tiling with Night Natural herringbone laid tiling to floors.

The principal bathroom features an illuminated recessed niche finished in Terrazzo Stone with glass shelving and vanity unit in lacquered Pasadena Pine with pure white stone top.

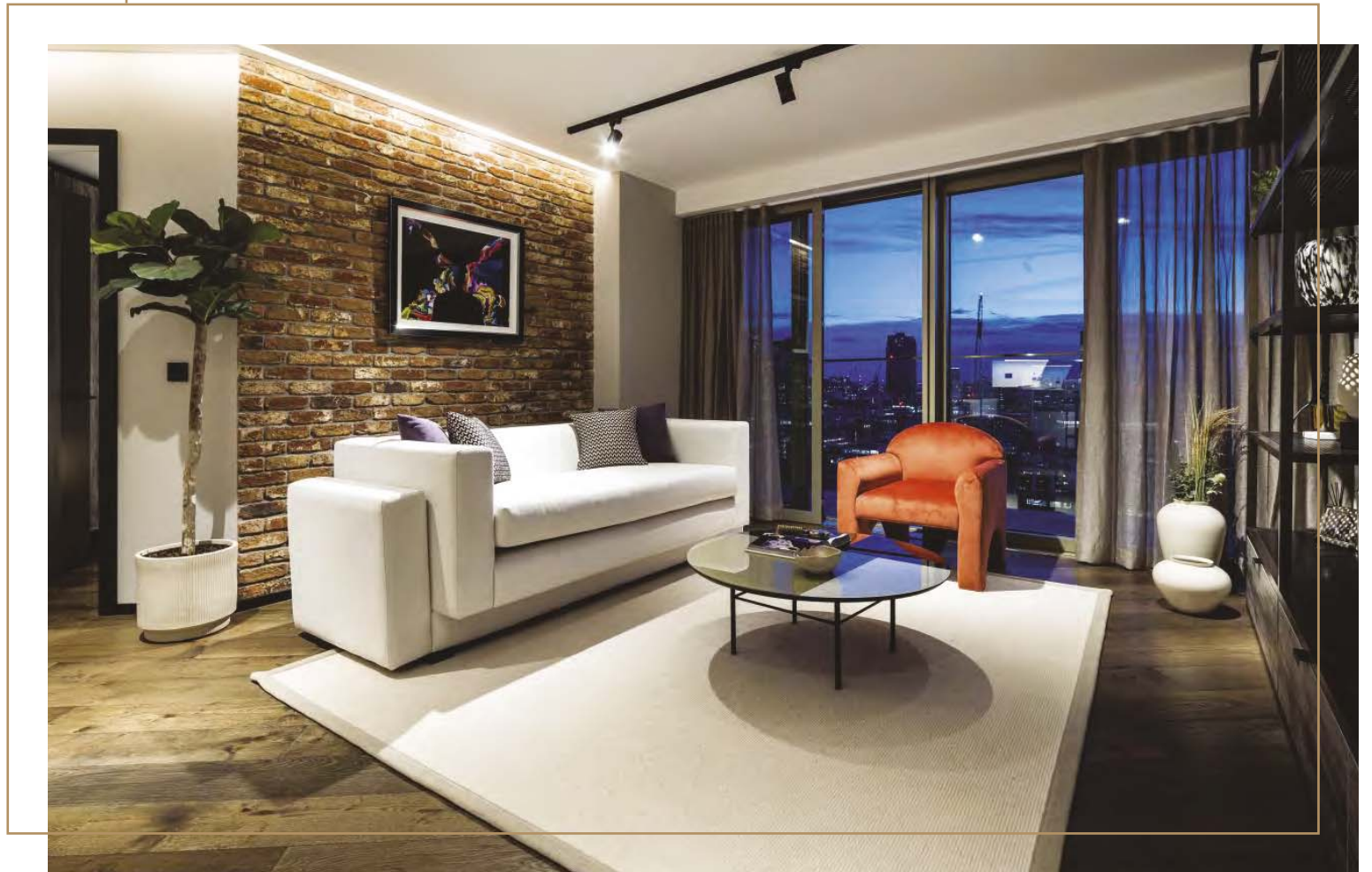
Above the vanity is an antique bronze framed demisting mirror with concealed backlighting.



Example 2 bedroom apartment
The Stage comprises 89 luxurious 2 bedroom apartments of which 24 are in this style with varying balcony/terrace configurations.
All 2 bedroom types are between 849 and 1425 sq.ft.

2 BEDROOM APARTMENTS





All apartments at The Stage are specified with a bespoke fitted entertainment unit incorporating steel framing in Nordic Bronze with mesh shelving and low level storage.

An LED Smart TV forms part of the unit together a Sonos Playbar sound system.

The principal living area also features a distinctive brick slip wall echoing the urban elegance of each apartment.



The distinct interior design specifications at The Stage capture the very essence of contemporary urban elegance. Finishes are refined, detailed and masterfully co-ordinated to provide a palette of rich, warm wood tones that blend harmoniously with beiges, greys, matt black and hues of bronze.

Bedrooms offer beautifully proportioned space which exudes a sense of calm serenity while providing tonal focal points defined with the use of Pasadena Pine, grey smoked mirror glass and black track lighting.



Example 3 bedroom apartment

The Stage has 35 fabulous 3 bedroom apartments arranged from level 19 upwards. There are 15 of this style (2406 shown) with varying internal layout and balcony/terrace configurations.

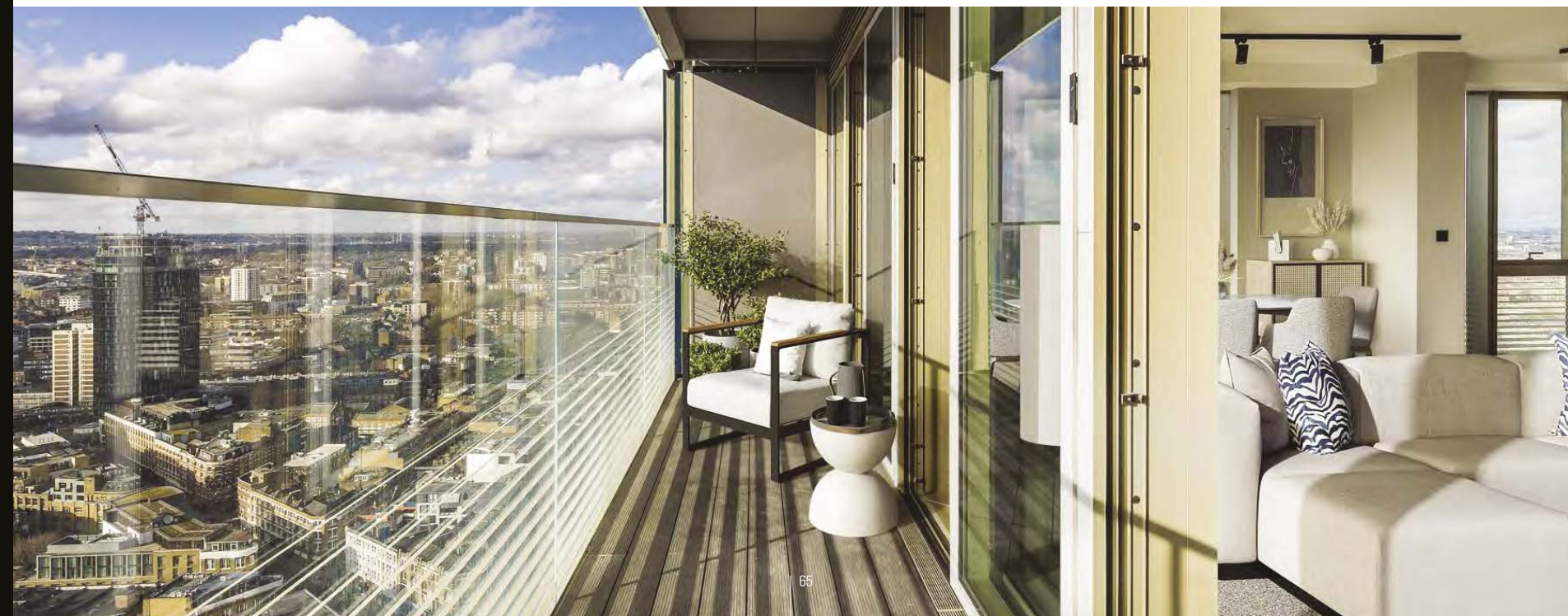
All 3 bedroom types are between 1,384 and 1,707 sq.ft.

3 BEDROOM APARTMENTS

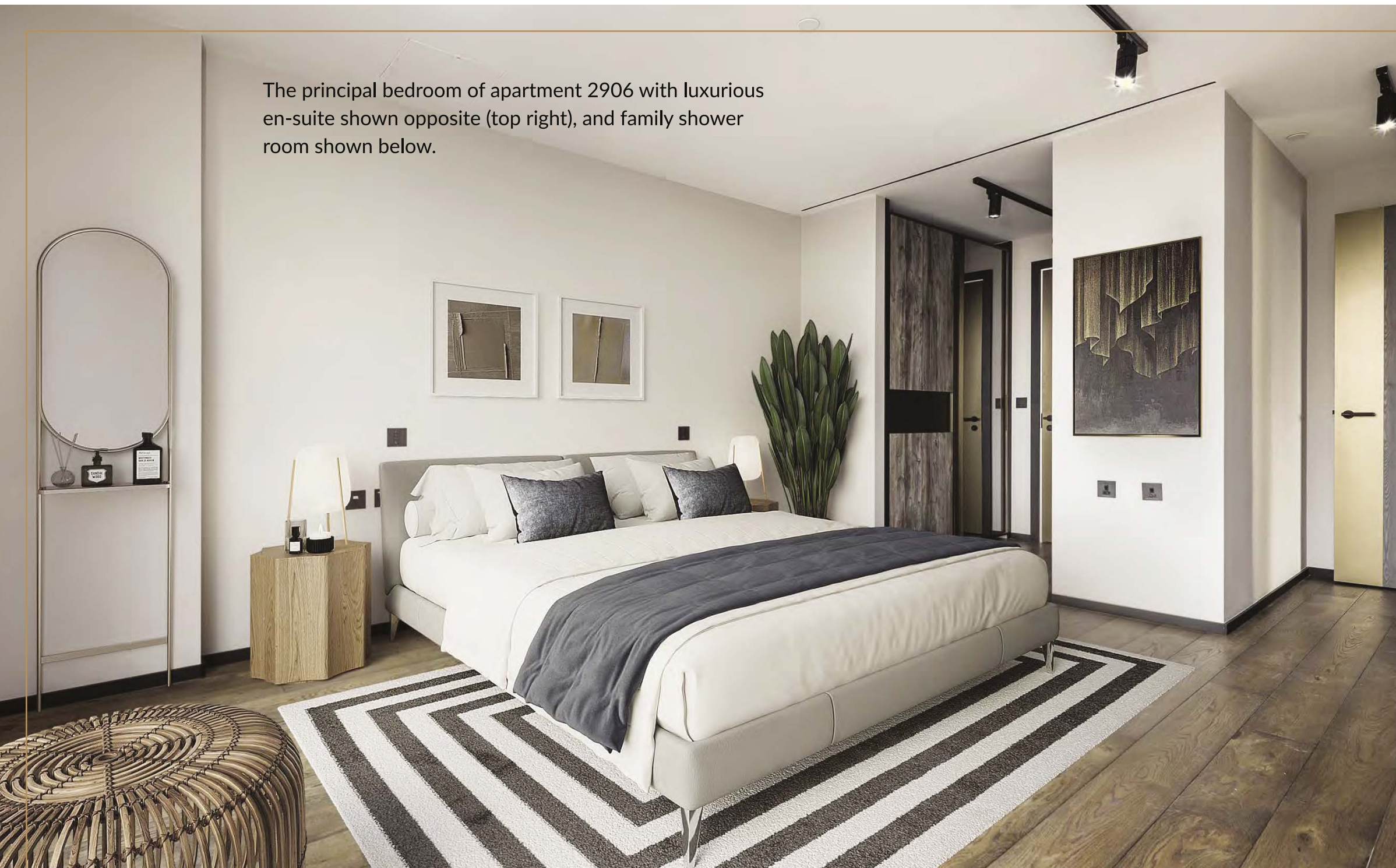




Each 3 bedroom apartment incorporates an en-suite bathroom to bedroom 1 with many second bedrooms also benefitting from an en-suite. All are dual or triple aspect with both a terrace and single or double balcony combination to maximise on the breathtaking views across London's skyline. Each 3 bedroom apartment also features extensive areas of full height glazing providing an abundance of natural light.



The principal bedroom of apartment 2906 with luxurious en-suite shown opposite (top right), and family shower room shown below.





GENERAL SPECIFICATION

- Matt grey warm tone painted walls and brilliant white smooth ceilings.
- Matt black skirting.
- Natural oak one strip hardwood engineered flooring to kitchen, hallway, living/dining area and all bedrooms.
- Extended height beige/grey timber lacquer finish internal doors with bronze strip to lever side (also entrance door).
- Matt black finish architraves.
- Matt black/brushed antique bronze door furniture including lever door handles.
- Black coated switch and socket plates.
- USB socket outlet to all rooms.
- Programmable mood lighting to principal living area and all bedrooms.
- Black track lighting to living/dining area and kitchen.
- Recessed LED downlighting to bathrooms.
- Double glazing throughout.
- Sonos Play 1 wireless multi-room speaker (or equivalent future technology).
- Comfort cooling/space heating to living area and each bedroom of apartments (suites living area only).
- Superfast fibre broadband enabled and pre-installed to each suite and apartment.

LIVING/DINING ROOM

- Feature brick slip wall.
- Bespoke fitted entertainment unit incorporating steel framing in Nordic bronze with Pasadina Pine doors and Nordic bronze mesh shelving.
- 55-65" LED smart TV within entertainment unit.
- Sonos Playbar (or equivalent future technology) also within entertainment unit providing hi-fi quality sound and wireless music streaming (subject to subscription).
- TV socket set to living room (Sky+) subject to subscription. All TV socket sets to include digital radio and terrestrial sockets.

- Telephone socket to living/dining area.
- Suites and selected one bedroom apartments to incorporate Crittall style sliding doors dividing living and bedroom areas. Track system in matt black, 3-4 sliding panels with fluted glass to both faces.

KITCHEN AREA

- Bespoke vertical grain oak faced base and wall units incorporating bronzed strip handleless doors, pure white composite/quartz stone worktops and splashbacks.
- Low energy wall unit under lighting.
- Selected suites to feature full height bronze framed sliding grey smoked mirrored doors concealing kitchen and appliances.
- Fully integrated stainless steel electric appliances to include:-
 - Miele single oven
 - Miele 4 ring induction hob (2 ring in suites)
 - Concealed telescopic cooker hood
 - Washer/dryer (freestanding if within utility cupboard)
 - Miele dishwasher
 - Miele fridge/freezer (Siemens to selected suites).
- Integrated Miele microwave (or combi oven).
- Composite bowl under-mounted sink with graphite '3-in-1' hot, cold and boiling water tap.
- Centralised appliance isolator switch panel.

BEDROOM

- Bespoke floor to ceiling fitted wardrobe to principal bedroom with antique bronze frame and detailing, Pasadina Pine doors with bronze inlay and grey smoked mirror to one door. (Second and third bedrooms Pasadina Pine doors only.)
- TV socket set to all bedrooms (Sky) subject to subscription. All TV socket sets to include digital radio and terrestrial sockets.
- Telephone extension socket to all bedrooms.

BATHROOM/SHOWER ROOM

- Night Natural small format porcelain/ceramic herringbone tiling to floors.
- Valentina Urban large format porcelain/ceramic wall tiling.
- Feature Terrazzo recessed niche to principal bathroom with glass shelving.
- Electric mat underfloor warming.
- Black steel shaver socket concealed in wall unit.
- White bathroom suite featuring shower or steel bath, Villeroy & Boch wall hung WC and undermount basin.
- Black basin mixer tap, bottle trap, cistern push plate, thermostatic bath filler/shower mixer diverter.
- Vanity base and wall unit in lacquered Pasadina Pine with antique bronze framing demisting integrated mirror and concealed lighting.
- Vanity top in composite pure white stone.
- Matt black glass bath panel.
- Black Crittall style bath screen/shower enclosure.
- Concealed plumbing fixed matt black shower head over bath and in shower enclosure with low level matt black hose and handset.
- Black square profile heated towel rail with summertime control.
- 22 inch tile vision LCD TV to bathrooms over bath.

SECURITY

- Smoke detector to hallway.
- Audio/video entryphone system.
- Hotel style all on/off switch allowing quick shutdown of the apartment lighting and entertainment system upon leaving.

Note:
Suite kitchen may not incorporate a full complement of appliances or may not be fully integrated subject to layout.

Actual view from level 16 looking west.

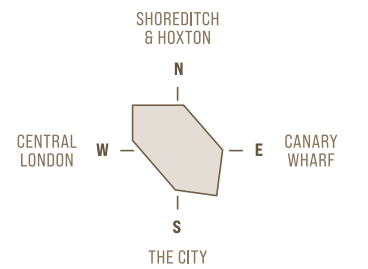


EXAMPLE MID-LEVEL VIEWS



- Suite
- 1 bedroom
- 2 bedroom

Actual view from level 16 looking east.



Apartment levels 15-20 will enjoy similar views looking East and West, all directions and aspects at these levels encompass superb panoramic views.



Actual view from level 29 looking west.



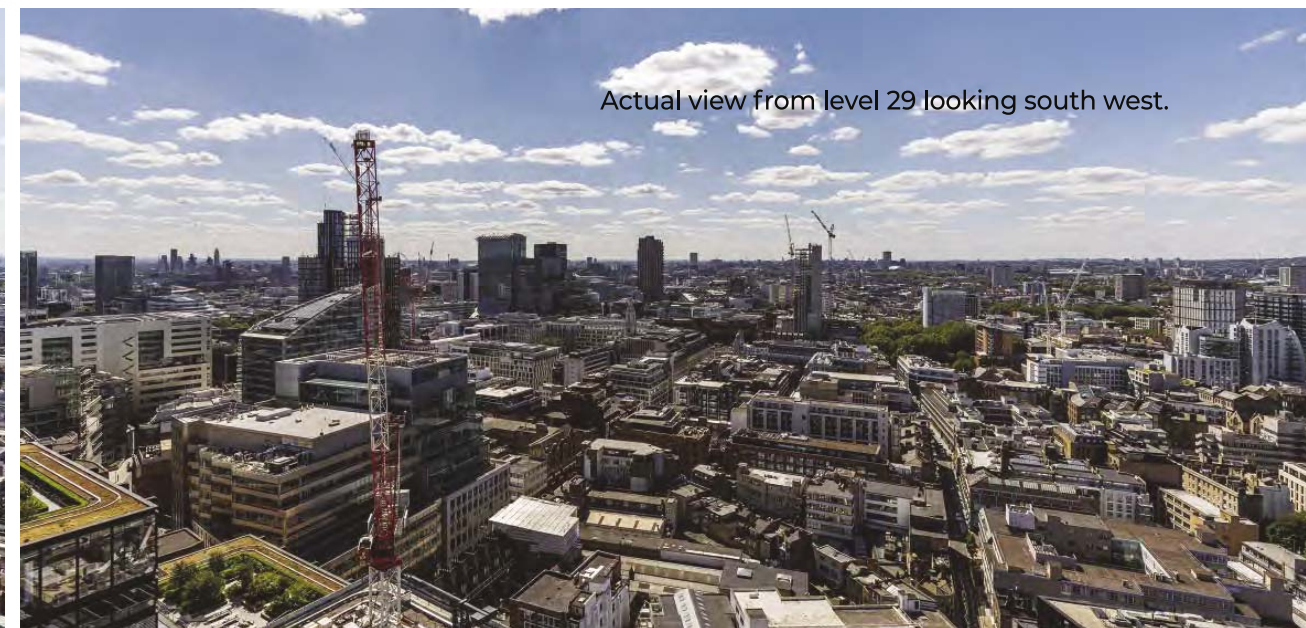
Actual view from level 29 looking north west.



Actual view from level 29 looking east.



Actual view from level 29 looking south.

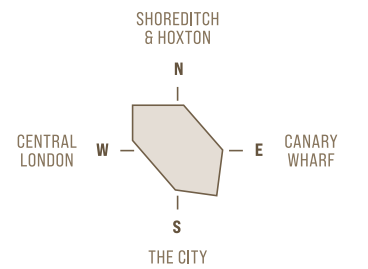


Actual view from level 29 looking south west.

EXAMPLE UPPER-LEVEL VIEWS



- Suite
- 2 bedroom
- 3 bedroom

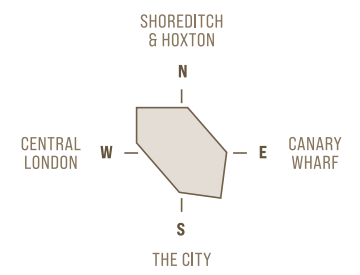
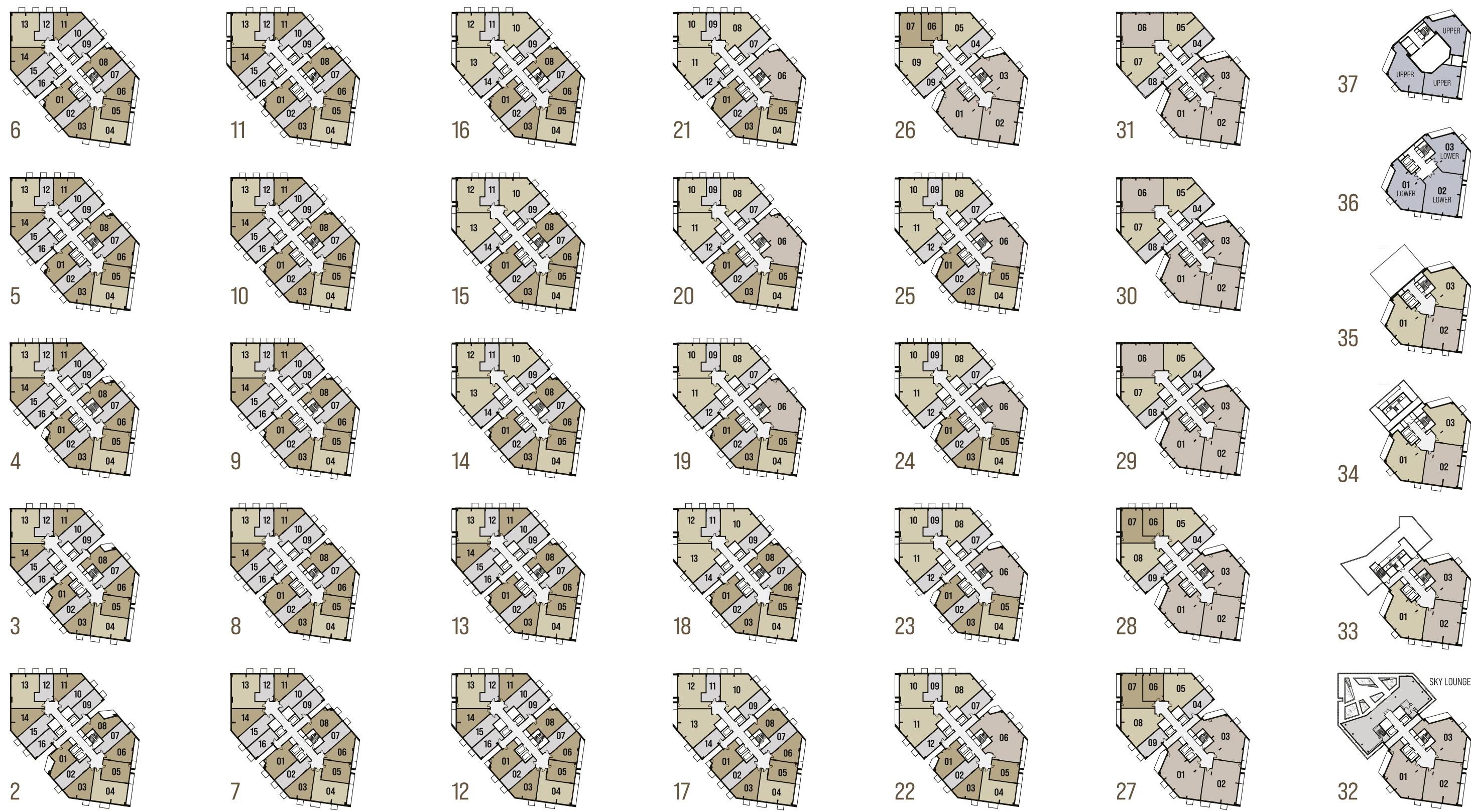


These views from level 29 will be shared by all apartments from levels 25 to 30 - where residents' can take in the Capital's vast cityscape and ever changing aspects from sunrise to sunset.

**THE
STAGE.
EC2**
SHOREDITCH

EXAMPLE FLOOR PLANS

APARTMENT TYPE & BLOCK PLAN OVERVIEW



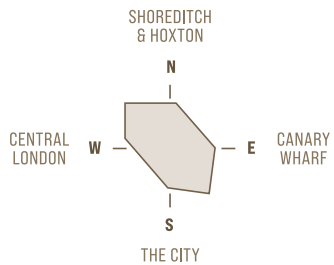
The Stage comprises highly specified suites, 1, 2 & 3 bedroom apartments together with three 4 bedroom duplex penthouses crowning the two upper levels.

Each apartment has one or more private balconies or a balcony/terrace combination.

The tower incorporates an exclusive residents' Sky Lounge at level 32 with a further array of fabulous lifestyle facilities located within the lower basement levels.

- Suite
- 1 bedroom apartment
- 2 bedroom apartment
- 3 bedroom apartment
- 4 bedroom duplex penthouse

LEVEL 2



No.	Type	SQ.M.	SQ.FT
2 01	1 Bed	51.5	554
2 02	Suite	46.8	504
2 03	1 Bed	54.1	582
2 04	2 Bed	78.9	849
2 05	1 Bed	52.1	561
2 06	1 Bed	52.4	564
2 07	Suite	43.5	468
2 08	1 Bed	46.0	495
2 09	Suite	40.3	434
2 10	Suite	45.8	493
2 11	1 Bed	50.7	546
2 12	Suite	39.1	421
2 13	2 Bed	90.5	974
2 14	1 Bed	57.4	618
2 15	Suite	46.3	498
2 16	Suite	40.2	433

LEVEL 4

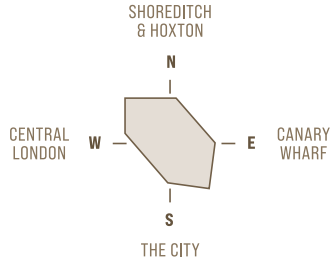


- Suite
- 1 bedroom
- 2 bedroom

No.	Type	SQ.M.	SQ.FT
4 01	1 Bed	59.1	636
4 02	Suite	46.8	504
4 03	1 Bed	54.1	582
4 04	2 Bed	78.9	849
4 05	1 Bed	52.1	561
4 06	1 Bed	52.4	564
4 07	Suite	43.5	468
4 08	1 Bed	54.8	590
4 09	Suite	40.3	434
4 10	Suite	45.8	493
4 11	1 Bed	50.7	546
4 12	Suite	39.1	421
4 13	2 Bed	90.5	974
4 14	1 Bed	57.4	618
4 15	Suite	46.3	498
4 16	Suite	40.2	433

Apartment layouts are intended to be correct, precise details may vary, furniture shown for illustrative purposes only. Total areas are accurate to within 5%.

LEVEL 6



No.	Type	SQ.M.	SQ.FT
6 01	1 Bed	63.4	682
6 02	Suite	46.8	504
6 03	1 Bed	54.1	582
6 04	2 Bed	78.9	849
6 05	1 Bed	52.1	561
6 06	1 Bed	52.4	564
6 07	Suite	43.5	468
6 08	1 Bed	59.3	638
6 09	Suite	40.3	434
6 10	Suite	45.8	493
6 11	1 Bed	50.7	546
6 12	Suite	39.1	421
6 13	2 Bed	90.5	974
6 14	1 Bed	57.4	618
6 15	Suite	45.9	494
6 16	Suite	40.2	433

LEVEL 14

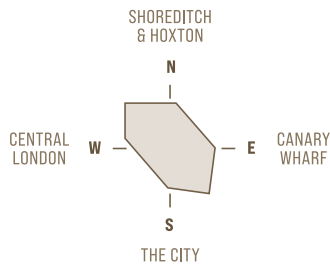


- Suite
- 1 bedroom
- 2 bedroom

No.	Type	SQ.M.	SQ.FT
14 01	1 Bed	63.4	682
14 02	Suite	46.8	504
14 03	1 Bed	54.1	582
14 04	2 Bed	78.9	849
14 05	1 Bed	52.1	561
14 06	1 Bed	51.9	558
14 07	Suite	43.5	468
14 08	1 Bed	59.3	638
14 09	Suite	40.3	434
14 10	2 bed	99.7	1073
14 11	Suite	39.1	421
14 12	2 bed	91.1	980
14 13	2 Bed	107.0	1152
14 14	Suite	40.2	433

Apartment layouts are intended to be correct, precise details may vary, furniture shown for illustrative purposes only. Total areas are accurate to within 5%.

LEVEL 19



No.	Type	SQ.M.	SQ.FT
19 01	1 Bed	62.3	670
19 02	Suite	46.8	504
19 03	1 Bed	54.1	582
19 04	2 Bed	78.9	849
19 05	1 Bed	52.1	561
19 06	3 Bed	159.8	1720
19 07	Suite	40.3	434
19 08	2 Bed	99.7	1073
19 09	Suite	39.1	421
19 10	2 bed	91.1	980
19 11	2 bed	107.0	1152
19 12	Suite	40.2	433

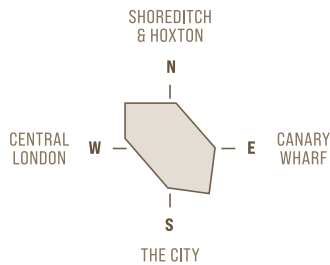
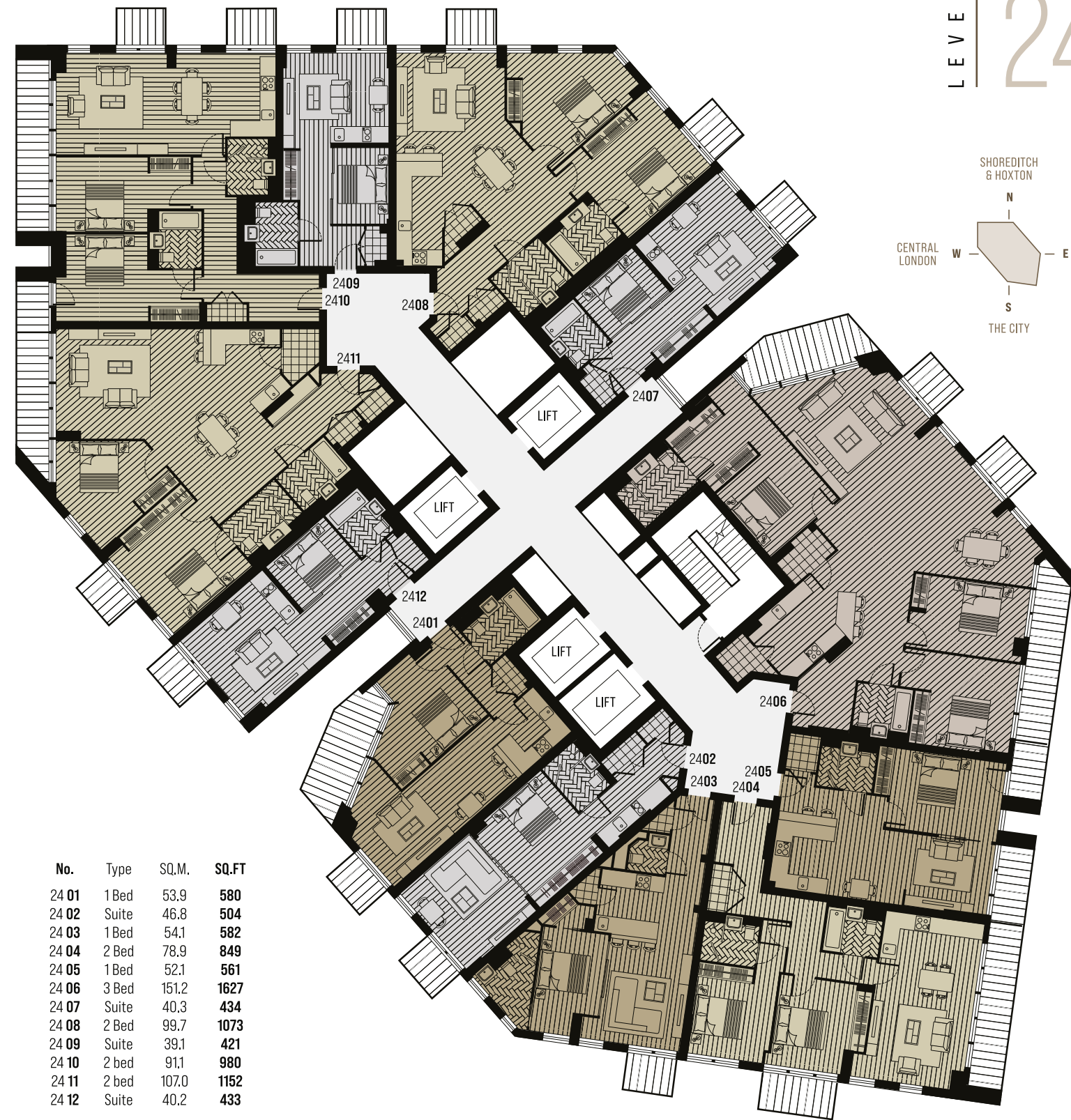
Apartment layouts are intended to be correct, precise details may vary, furniture shown for illustrative purposes only. Total areas are accurate to within 5%.

LEVEL 22



No.	Type	SQ.M.	SQ.FT
22 01	1 Bed	57.7	621
22 02	Suite	46.8	504
22 03	1 Bed	54.1	582
22 04	2 Bed	78.8	848
22 05	1 Bed	52.1	561
22 06	3 Bed	155.4	1673
22 07	Suite	40.3	434
22 08	2 Bed	99.7	1073
22 09	Suite	39.1	421
22 10	2 bed	91.1	980
22 11	2 bed	107.0	1152
22 12	Suite	40.2	433

LEVEL 24



No.	Type	SQ.M.	SQ.FT
24 01	1 Bed	53.9	580
24 02	Suite	46.8	504
24 03	1 Bed	54.1	582
24 04	2 Bed	78.9	849
24 05	1 Bed	52.1	561
24 06	3 Bed	151.2	1627
24 07	Suite	40.3	434
24 08	2 Bed	99.7	1073
24 09	Suite	39.1	421
24 10	2 bed	91.1	980
24 11	2 bed	107.0	1152
24 12	Suite	40.2	433

Apartment layouts are intended to be correct, precise details may vary, furniture shown for illustrative purposes only. Total areas are accurate to within 5%.

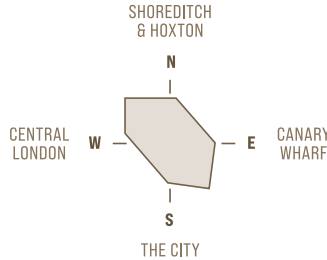
LEVEL 27



- Suite
- 1 bedroom
- 2 bedroom
- 3 bedroom

No.	Type	SQ.M.	SQ.FT
27 01	3 Bed	153.7	1654
27 02	3 Bed	134.5	1448
27 03	3 Bed	144.2	1552
27 04	Suite	40.3	434
27 05	2 Bed	99.7	1073
27 06	1 Bed	53.0	570
27 07	1 Bed	77.1	830
27 08	2 Bed	107.0	1152
27 09	Suite	40.2	433

LEVEL 30



No.	Type	SQ.M.	SQ.FT
30 01	3 Bed	145.8	1569
30 02	3 Bed	134.5	1448
30 03	3 Bed	136.6	1470
30 04	Suite	40.5	436
30 05	2 Bed	100.2	1078
30 06	3 Bed	133.7	1439
30 07	2 Bed	107.3	1155
30 08	Suite	40.2	433

Apartment layouts are intended to be correct, precise details may vary, furniture shown for illustrative purposes only. Total areas are accurate to within 5%.

LEVEL 34



- Suite
- 1 bedroom
- 2 bedroom
- 3 bedroom

No.	Type	SQ.M.	SQ.FT
34 01	2 Bed	132.4	1425
34 02	3 Bed	134.5	1448
34 03	2 Bed	125.7	1353



Galliard Homes

LONDON

Sales & Marketing Suite
22 Hewett Street
London EC2A 3NL

+44 (0) 203 770 2154
galliardhomes.com



Galliard Homes

SHANGHAI

Sales & Marketing Suite
2705, Tower 2,
Jing'an Kerry Center
1539 West Nanjing Rd
Jing'an District, Shanghai

+86 (21) 6090 5799
galliardhomeschina.com



Galliard Homes

HONG KONG

Sales & Marketing Suite
Room 802, 8/F,
Jubilee Centre
18 Fenwick Street
Wanchai, Hong Kong

+852 2550 5598
galliardhomeshk.com



These particulars are compiled with care to give a fair description but we cannot guarantee their accuracy and they do not constitute an offer or contract. Galliard Homes reserve the right to alter any specifications and floor plan layouts without prior notice. All journey times stated are approximate, source tfl.gov.uk. Walking times taken from google.com. Exterior images of The Stage are computer generated and deemed to be accurate at time of going to print. Potential purchasers should satisfy themselves as to the actual view any apartment will provide. The health and leisure facilities shown in this brochure may be subject to change by any operator or third party undertaking the management branding of the facility space. The Stage is a preferred marketing name only.

