

IN JOINT VENTURE



THE
ESTATE OFFICE
SHOREDITCH
LAND & BUILDINGS
SINCE 1966

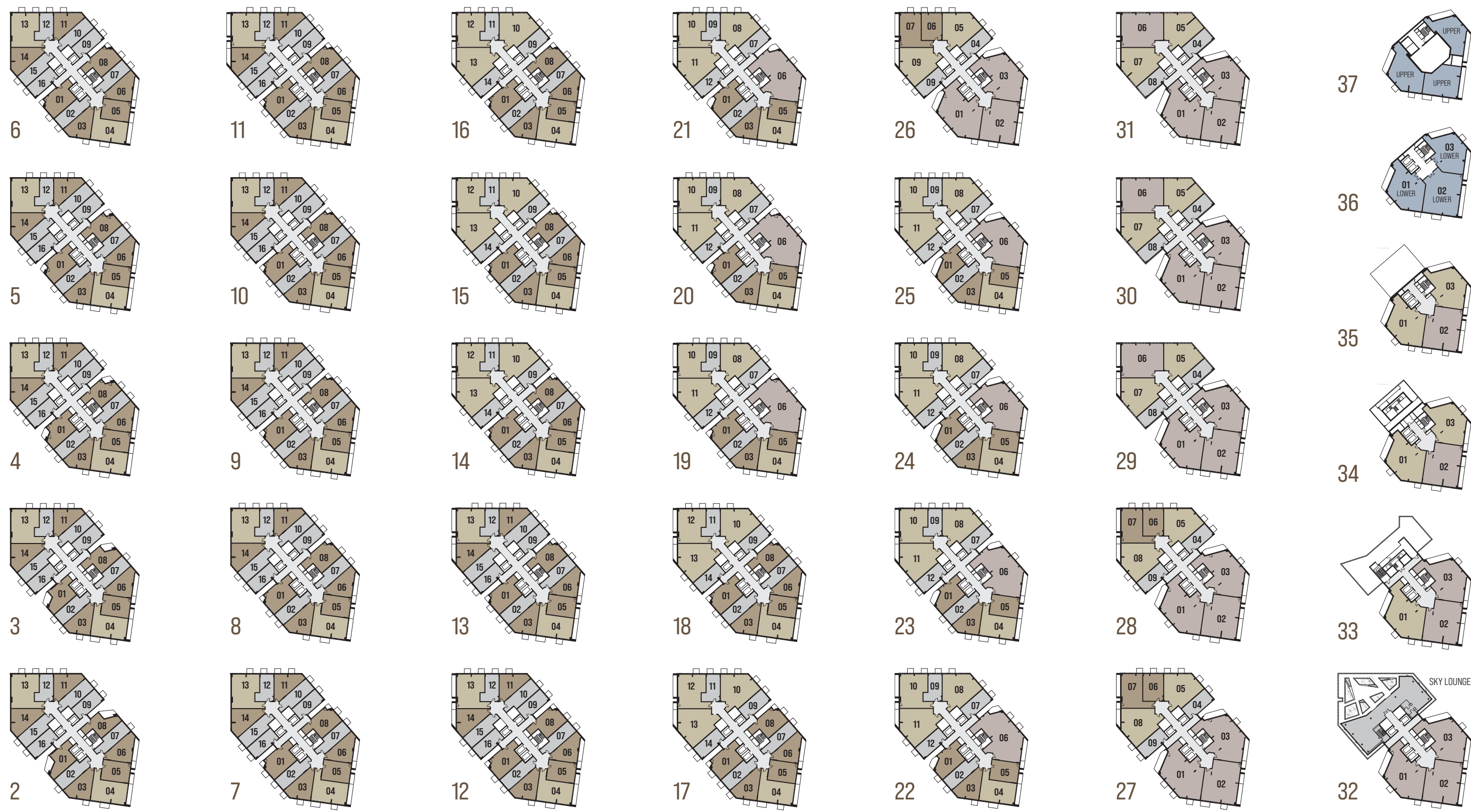
THE
STAGE.
EC2
SHOREDITCH

412 private apartments
offering one of the Capital's
most distinguished & luxurious
lifestyle opportunities.



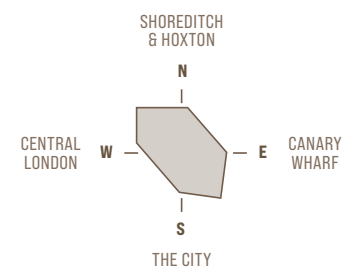


The Stage rises 37 levels to grace London's iconic skyline while providing an everchanging panorama of breathtaking views from dawn to dusk.



2-37

APARTMENT TYPE OVERVIEW



The Stage comprises highly specified suites, 1, 2 & 3 bedroom apartments together with three 4 bedroom duplex penthouses crowning the two upper levels.

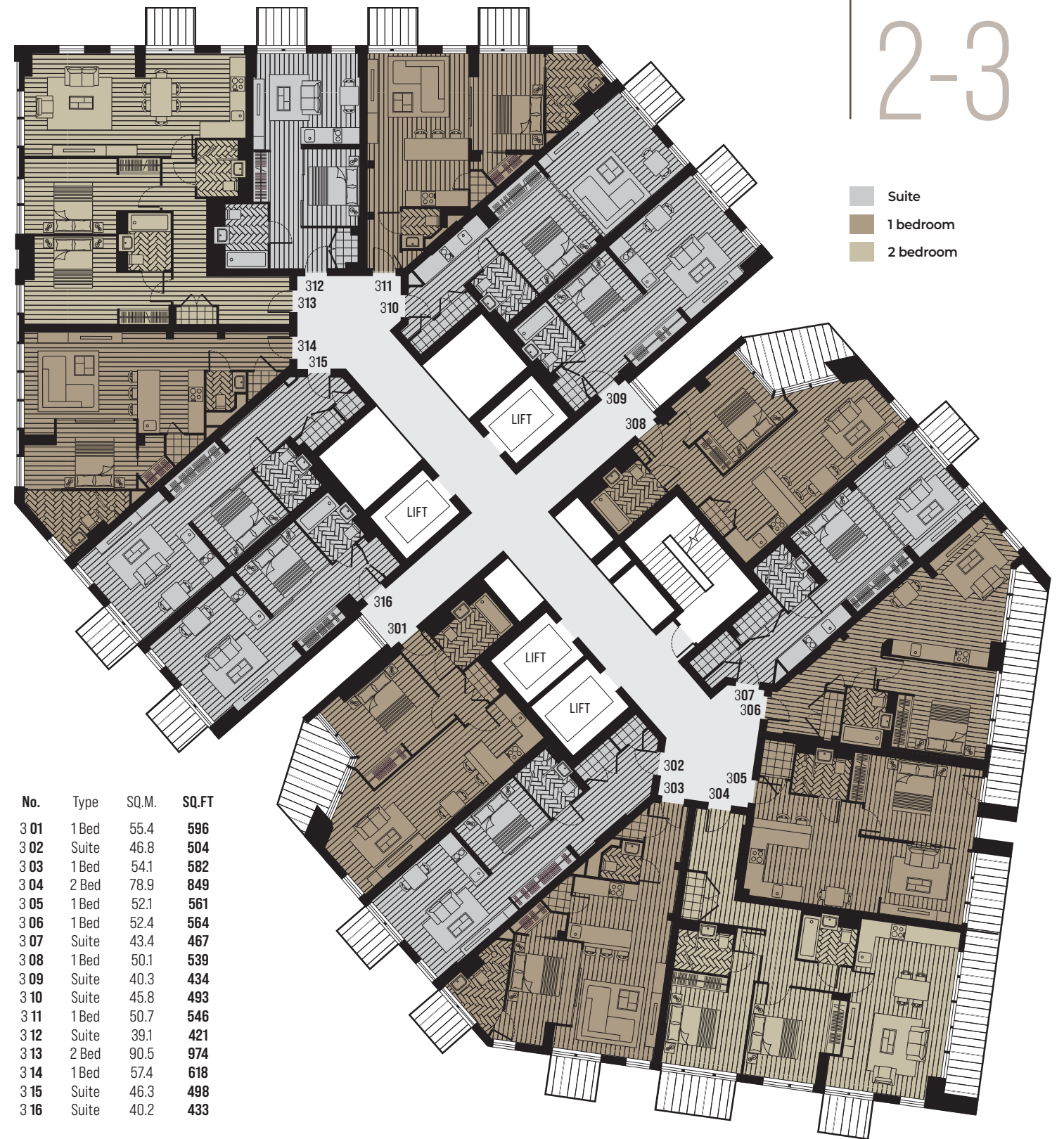
Each apartment has one or more private balconies or a balcony/terrace combination.

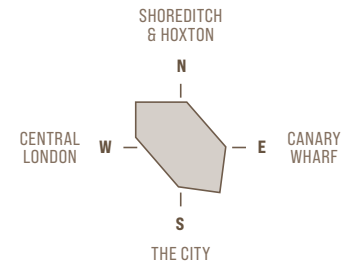
The tower incorporates an exclusive residents' sky lounge at level 32 with a further array of fabulous lifestyle facilities located within the lower basement levels.

- Suite
- 1 bedroom apartment
- 2 bedroom apartment
- 3 bedroom apartment
- 4 bedroom duplex penthouse



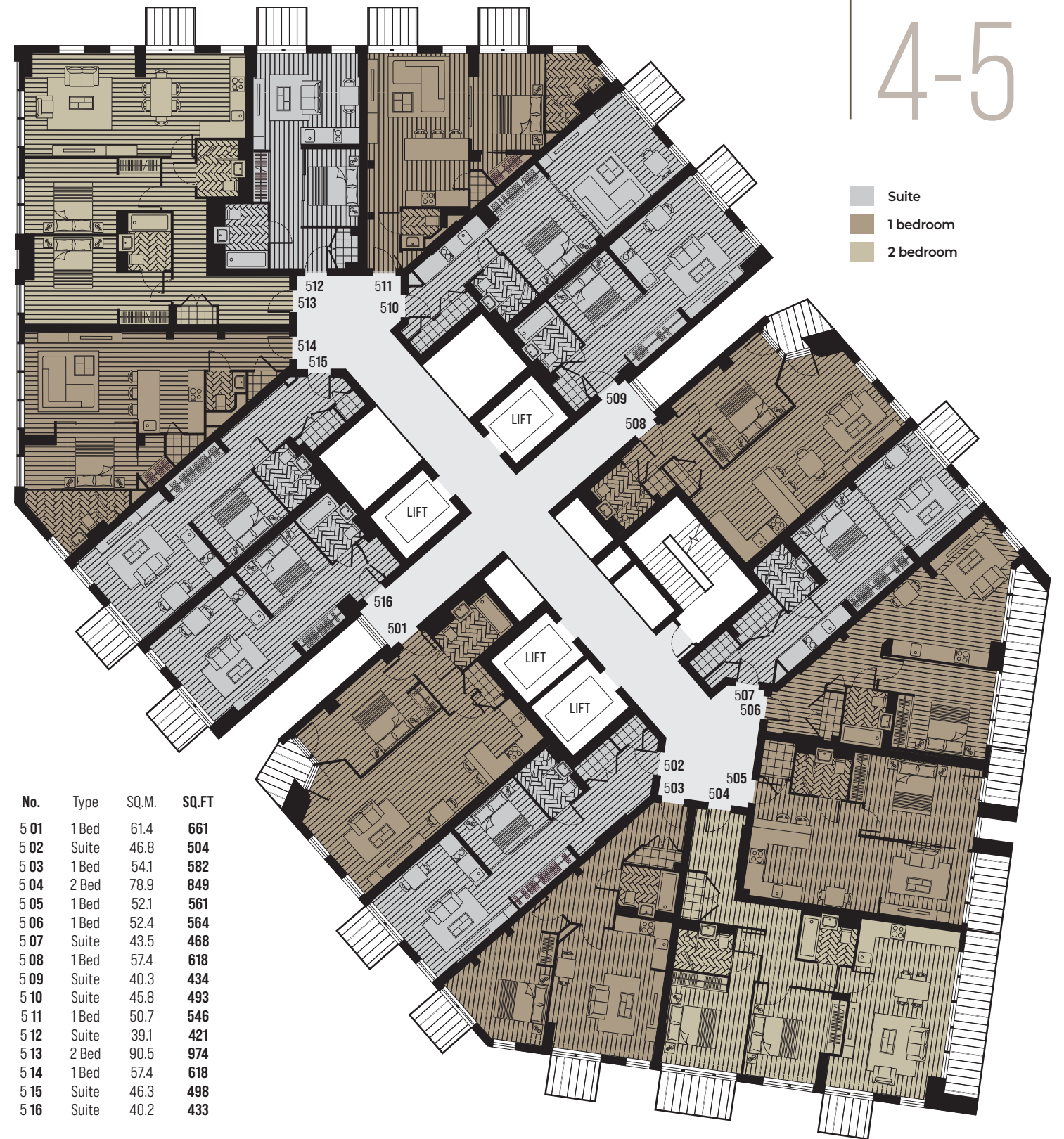
Apartment layouts are intended to be correct, precise details may vary, furniture shown for illustrative purposes only. Total areas are accurate to within 5%.





No.	Type	SQ.M.	SQ.FT
4 01	1 Bed	59.1	636
4 02	Suite	46.8	504
4 03	1 Bed	54.1	582
4 04	2 Bed	78.9	849
4 05	1 Bed	52.1	561
4 06	1 Bed	52.4	564
4 07	Suite	43.5	468
4 08	1 Bed	54.8	590
4 09	Suite	40.3	434
4 10	Suite	45.8	493
4 11	1 Bed	50.7	546
4 12	Suite	39.1	421
4 13	2 Bed	90.5	974
4 14	1 Bed	57.4	618
4 15	Suite	46.3	498
4 16	Suite	40.2	433

Apartment layouts are intended to be correct, precise details may vary, furniture shown for illustrative purposes only. Total areas are accurate to within 5%.



4-5

- Suite
- 1 bedroom
- 2 bedroom

No.	Type	SQ.M.	SQ.FT
5 01	1 Bed	61.4	661
5 02	Suite	46.8	504
5 03	1 Bed	54.1	582
5 04	2 Bed	78.9	849
5 05	1 Bed	52.1	561
5 06	1 Bed	52.4	564
5 07	Suite	43.5	468
5 08	1 Bed	57.4	618
5 09	Suite	40.3	434
5 10	Suite	45.8	493
5 11	1 Bed	50.7	546
5 12	Suite	39.1	421
5 13	2 Bed	90.5	974
5 14	1 Bed	57.4	618
5 15	Suite	46.3	498
5 16	Suite	40.2	433

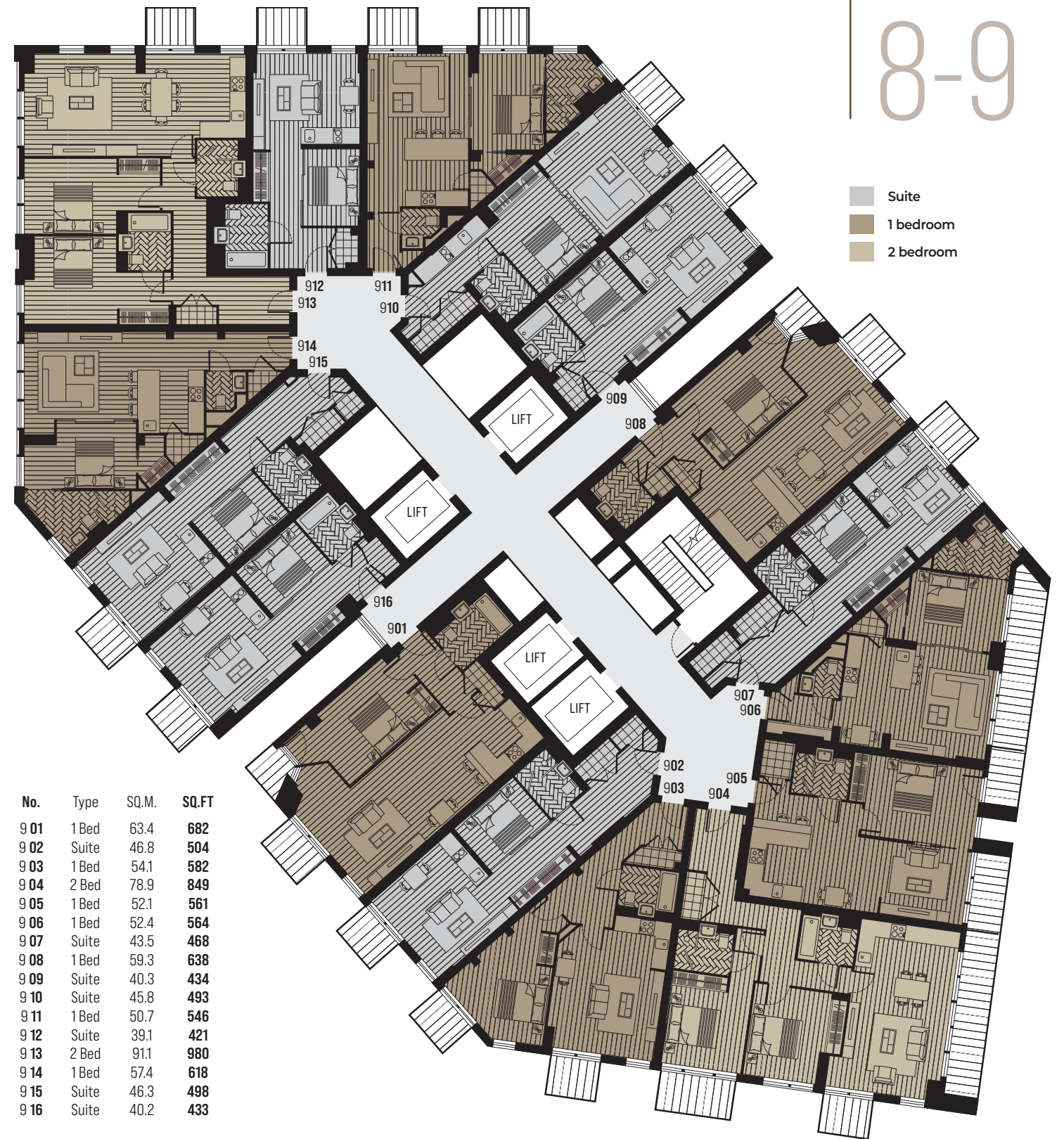


Apartment layouts are intended to be correct, precise details may vary, furniture shown for illustrative purposes only. Total areas are accurate to within 5%.





Apartment layouts are intended to be correct, precise details may vary, furniture shown for illustrative purposes only. Total areas are accurate to within 5%.





No.	Type	SQ.M.	SQ.FT
10 01	1 Bed	63.4	682
10 02	Suite	46.8	504
10 03	1 Bed	54.1	582
10 04	2 Bed	78.9	849
10 05	1 Bed	52.1	561
10 06	1 Bed	52.4	564
10 07	Suite	43.5	468
10 08	1 Bed	59.3	638
10 09	Suite	40.3	434
10 10	Suite	45.8	493
10 11	1 Bed	50.7	546
10 12	Suite	39.1	421
10 13	2 Bed	91.1	980
10 14	1 Bed	57.4	618
10 15	Suite	46.3	498
10 16	Suite	40.2	433



No.	Type	SQ.M.	SQ.FT
11 01	1 Bed	63.4	682
11 02	Suite	46.8	504
11 03	1 Bed	54.1	582
11 04	2 Bed	78.9	849
11 05	1 Bed	52.1	561
11 06	1 Bed	52.4	564
11 07	Suite	43.5	468
11 08	1 Bed	59.3	638
11 09	Suite	40.3	434
11 10	Suite	45.8	493
11 11	1 Bed	50.7	546
11 12	Suite	39.1	421
11 13	2 Bed	91.1	980
11 14	1 Bed	57.4	614
11 15	Suite	46.3	498
11 16	Suite	40.2	433

10-11

- Suite
- 1 bedroom
- 2 bedroom

Apartment layouts are intended to be correct, precise details may vary, furniture shown for illustrative purposes only. Total areas are accurate to within 5%.



12-13

- Suite
- 1 bedroom
- 2 bedroom

Apartment layouts are intended to be correct, precise details may vary, furniture shown for illustrative purposes only. Total areas are accurate to within 5%.



No.	Type	SQ.M.	SQ.FT
14 01	1 Bed	63.4	682
14 02	Suite	46.8	504
14 03	1 Bed	54.1	582
14 04	2 Bed	78.9	849
14 05	1 Bed	52.1	561
14 06	1 Bed	51.9	558
14 07	Suite	43.5	468
14 08	1 Bed	59.3	638
14 09	Suite	40.3	434
14 10	2 bed	99.7	1073
14 11	Suite	39.1	421
14 12	2 bed	91.1	980
14 13	2 Bed	107.0	1152
14 14	Suite	40.2	433

Apartment layouts are intended to be correct, precise details may vary, furniture shown for illustrative purposes only. Total areas are accurate to within 5%.

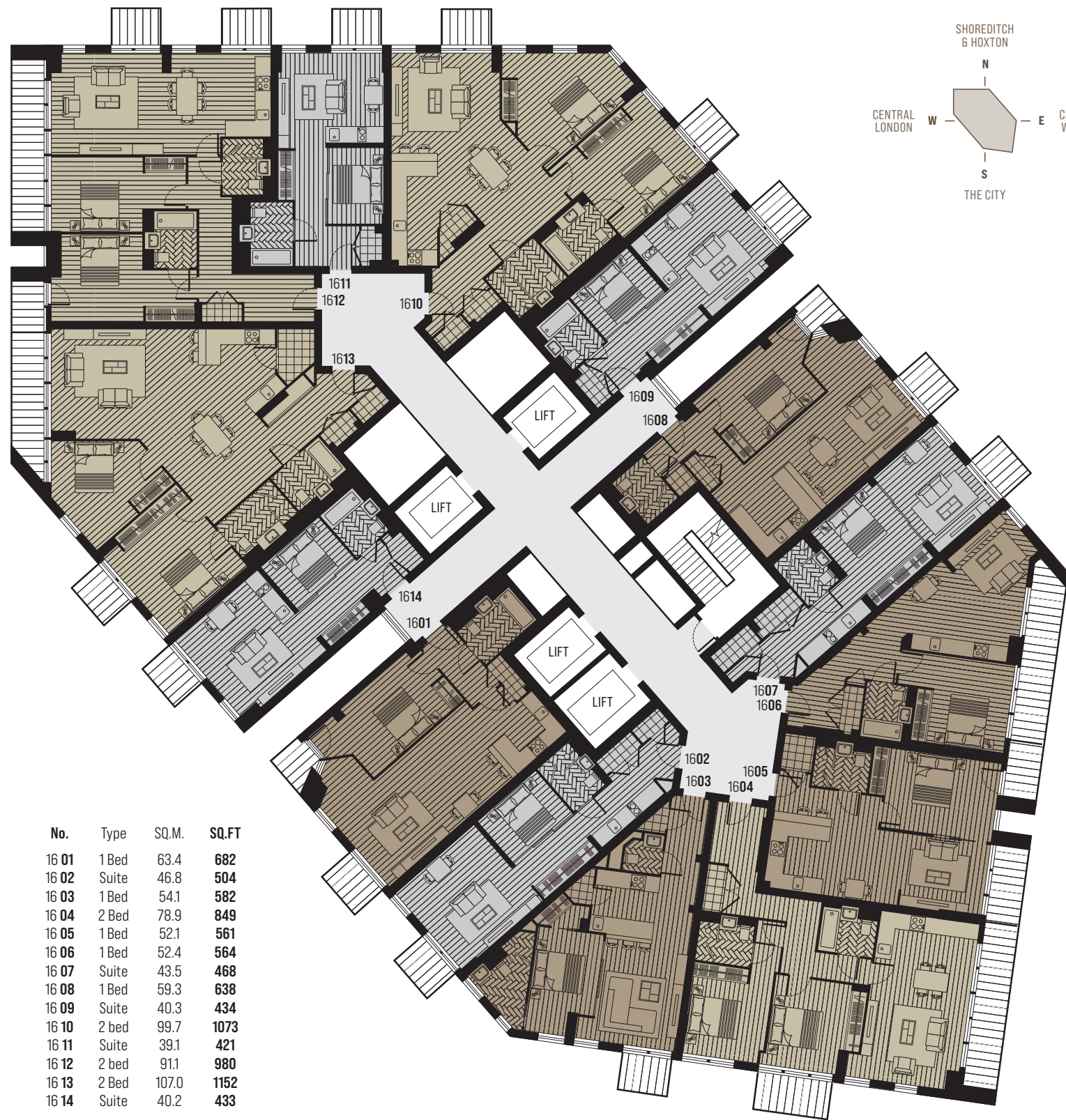


No.	Type	SQ.M.	SQ.FT
15 01	1 Bed	63.4	682
15 02	Suite	46.8	504
15 03	1 Bed	54.1	582
15 04	2 Bed	78.9	849
15 05	1 Bed	52.1	561
15 06	1 Bed	52.4	564
15 07	Suite	43.5	468
15 08	1 Bed	59.3	638
15 09	Suite	40.3	434
15 10	2 bed	99.7	1073
15 11	Suite	39.1	421
15 12	2 bed	91.1	980
15 13	2 Bed	107.0	1152
15 14	Suite	40.2	433

Apartment layouts are intended to be correct, precise details may vary, furniture shown for illustrative purposes only. Total areas are accurate to within 5%.

14-15

- Suite
- 1 bedroom
- 2 bedroom



No.	Type	SQ.M.	SQ.FT
16 01	1 Bed	63.4	682
16 02	Suite	46.8	504
16 03	1 Bed	54.1	582
16 04	2 Bed	78.9	849
16 05	1 Bed	52.1	561
16 06	1 Bed	52.4	564
16 07	Suite	43.5	468
16 08	1 Bed	59.3	638
16 09	Suite	40.3	434
16 10	2 bed	99.7	1073
16 11	Suite	39.1	421
16 12	2 bed	91.1	980
16 13	2 Bed	107.0	1152
16 14	Suite	40.2	433

Apartment layouts are intended to be correct, precise details may vary, furniture shown for illustrative purposes only. Total areas are accurate to within 5%.



No.	Type	SQ.M.	SQ.FT
17 01	1 Bed	63.4	682
17 02	Suite	46.8	504
17 03	1 Bed	53.5	576
17 04	2 Bed	78.9	849
17 05	1 Bed	52.1	561
17 06	1 Bed	52.4	564
17 07	Suite	43.5	468
17 08	1 Bed	59.3	638
17 09	Suite	40.3	434
17 10	2 bed	99.7	1073
17 11	Suite	39.1	421
17 12	2 bed	91.1	980
17 13	2 Bed	107.0	1152
17 14	Suite	40.2	433

16-17

- Suite
- 1 bedroom
- 2 bedroom

Actual view from level 16 looking west.



Actual view from level 16 looking east.

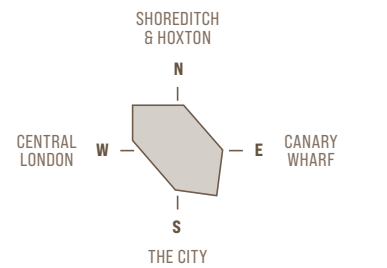


16-17

APARTMENT VIEWS

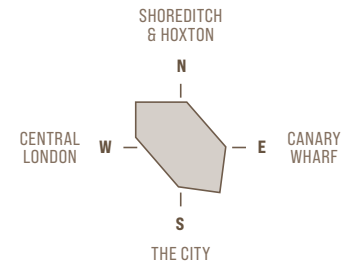


- Suite
- 1 bedroom
- 2 bedroom



Apartment levels 15-20 will enjoy similar views looking East and West, all directions and aspects at these levels encompass superb panoramic views.

18-19



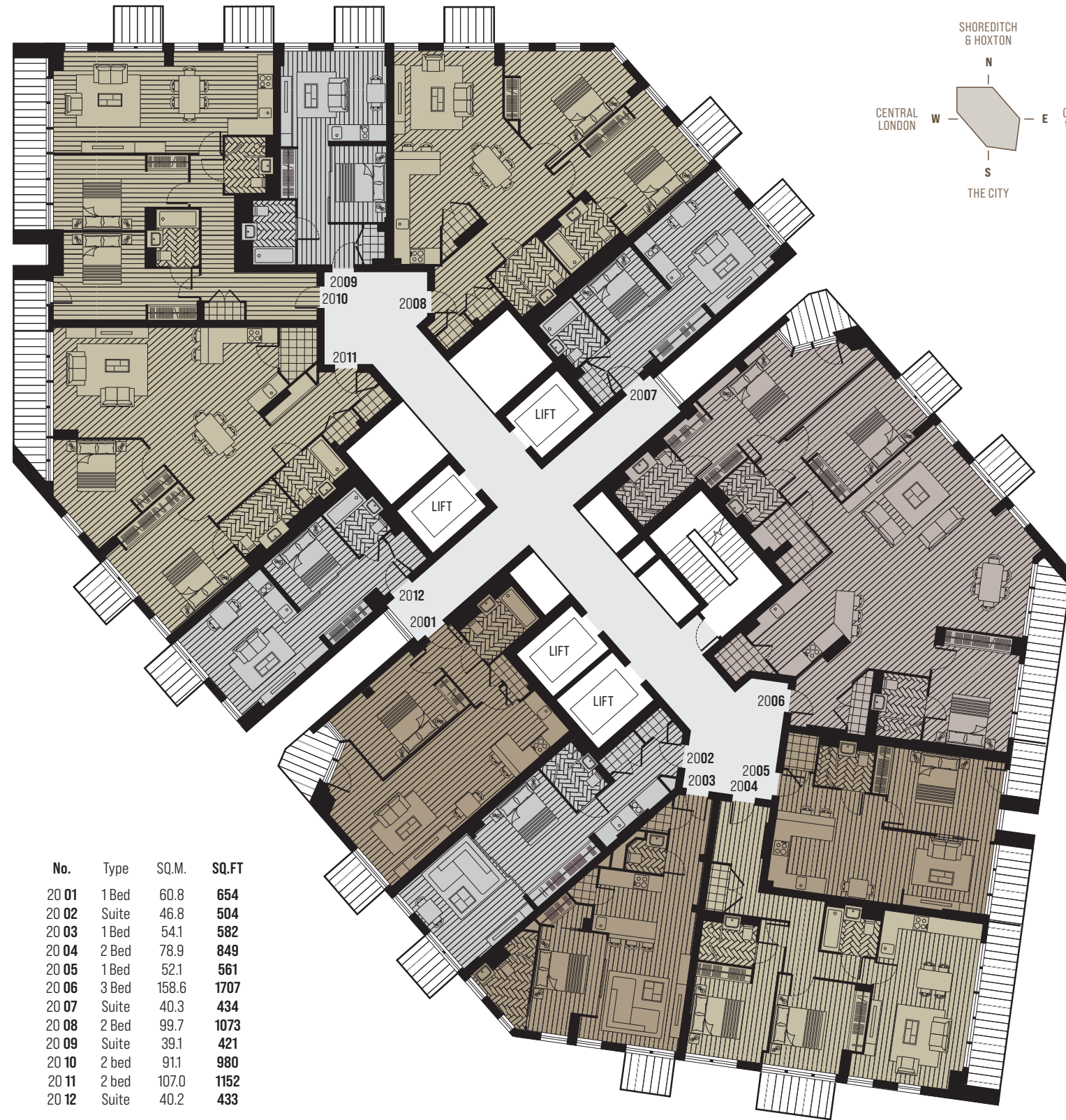
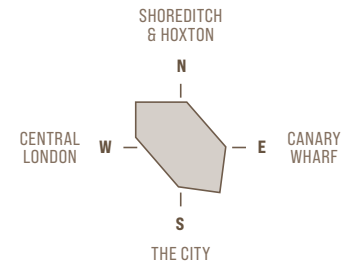
No.	Type	SQ.M.	SQ.FT
18 01	1 Bed	63.4	682
18 02	Suite	46.8	504
18 03	1 Bed	54.0	581
18 04	2 Bed	78.9	849
18 05	1 Bed	52.1	561
18 06	1 Bed	52.4	564
18 07	Suite	43.5	468
18 08	1 Bed	59.3	638
18 09	Suite	40.3	434
18 10	2 bed	99.7	1073
18 11	Suite	39.1	421
18 12	2 bed	91.1	980
18 13	2 Bed	107.0	1152
18 14	Suite	40.2	433



No.	Type	SQ.M.	SQ.FT
19 01	1 Bed	62.3	670
19 02	Suite	46.8	504
19 03	1 Bed	54.1	582
19 04	2 Bed	78.9	849
19 05	1 Bed	52.1	561
19 06	3 Bed	159.8	1720
19 07	Suite	40.3	434
19 08	2 Bed	99.7	1073
19 09	Suite	39.1	421
19 10	2 bed	91.1	980
19 11	2 bed	107.0	1152
19 12	Suite	40.2	433

Apartment layouts are intended to be correct, precise details may vary, furniture shown for illustrative purposes only. Total areas are accurate to within 5%.

20-21



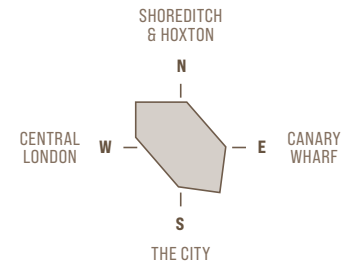
No.	Type	SQ.M.	SQ.FT
20 01	1 Bed	60.8	654
20 02	Suite	46.8	504
20 03	1 Bed	54.1	582
20 04	2 Bed	78.9	849
20 05	1 Bed	52.1	561
20 06	3 Bed	158.6	1707
20 07	Suite	40.3	434
20 08	2 Bed	99.7	1073
20 09	Suite	39.1	421
20 10	2 bed	91.1	980
20 11	2 bed	107.0	1152
20 12	Suite	40.2	433



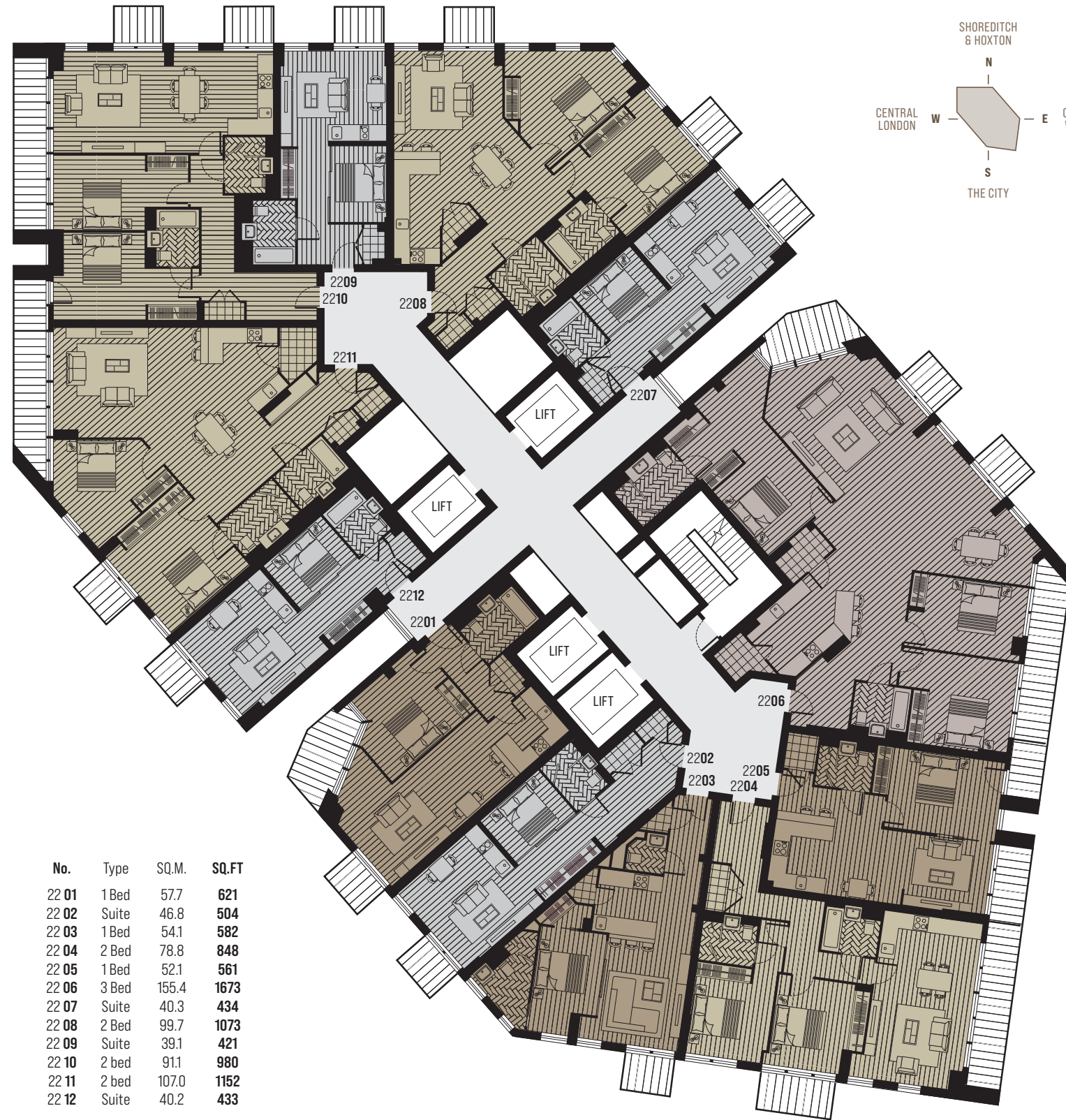
No.	Type	SQ.M.	SQ.FT
21 01	1 Bed	59.3	638
21 02	Suite	46.8	504
21 03	1 Bed	54.1	582
21 04	2 Bed	78.9	849
21 05	1 Bed	52.1	561
21 06	3 Bed	156.7	1687
21 07	Suite	40.3	434
21 08	2 Bed	99.7	1073
21 09	Suite	39.1	421
21 10	2 bed	91.1	980
21 11	2 bed	107.0	1152
21 12	Suite	40.2	433

Apartment layouts are intended to be correct, precise details may vary, furniture shown for illustrative purposes only. Total areas are accurate to within 5%.

22-23



- Suite
- 1 bedroom
- 2 bedroom
- 3 bedroom



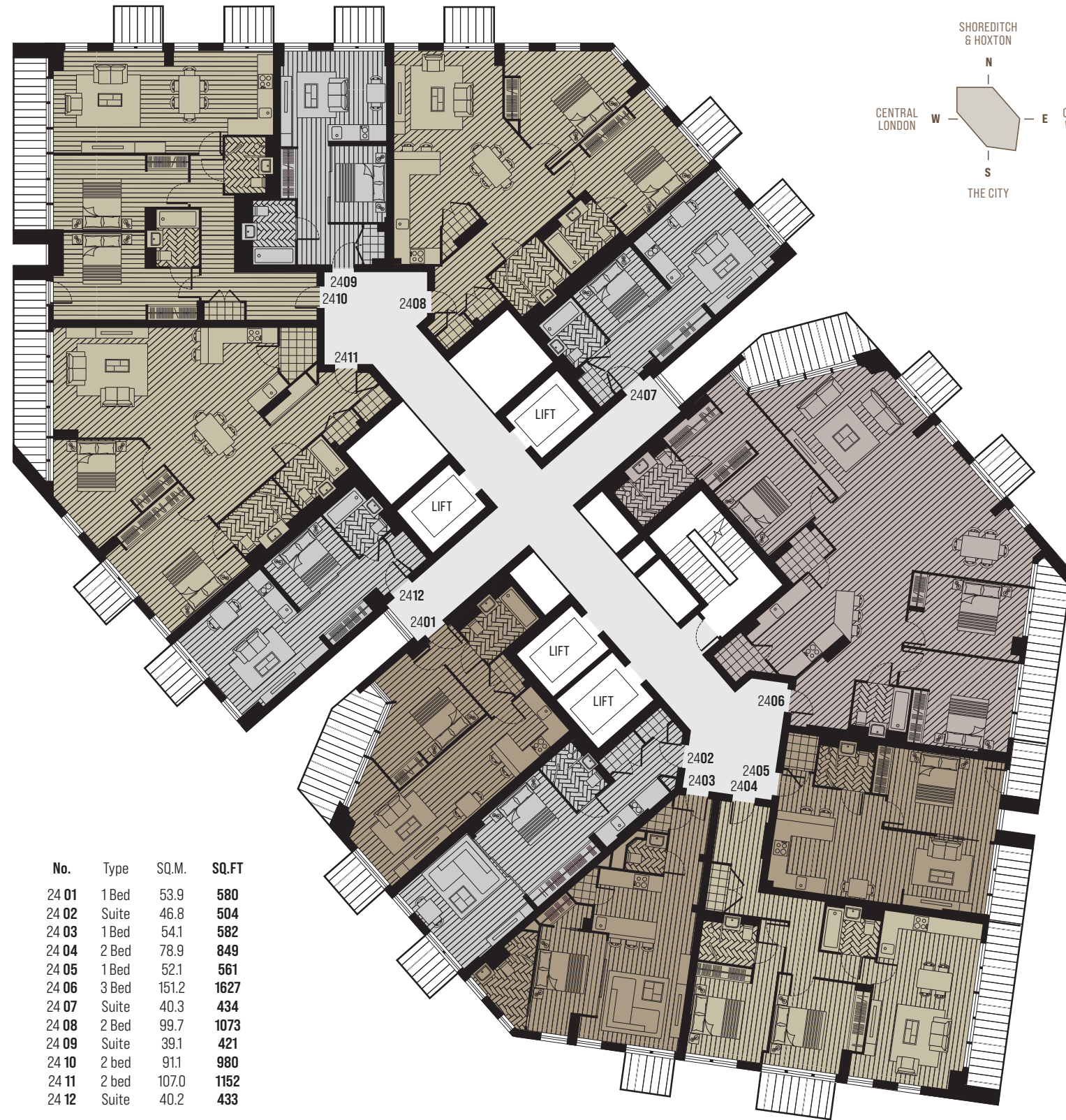
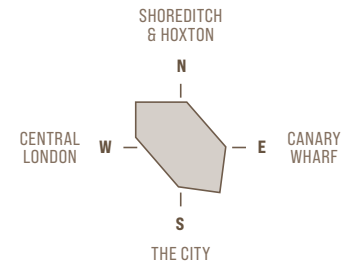
No.	Type	SQ.M.	SQ.FT
22 01	1 Bed	57.7	621
22 02	Suite	46.8	504
22 03	1 Bed	54.1	582
22 04	2 Bed	78.8	848
22 05	1 Bed	52.1	561
22 06	3 Bed	155.4	1673
22 07	Suite	40.3	434
22 08	2 Bed	99.7	1073
22 09	Suite	39.1	421
22 10	2 bed	91.1	980
22 11	2 bed	107.0	1152
22 12	Suite	40.2	433



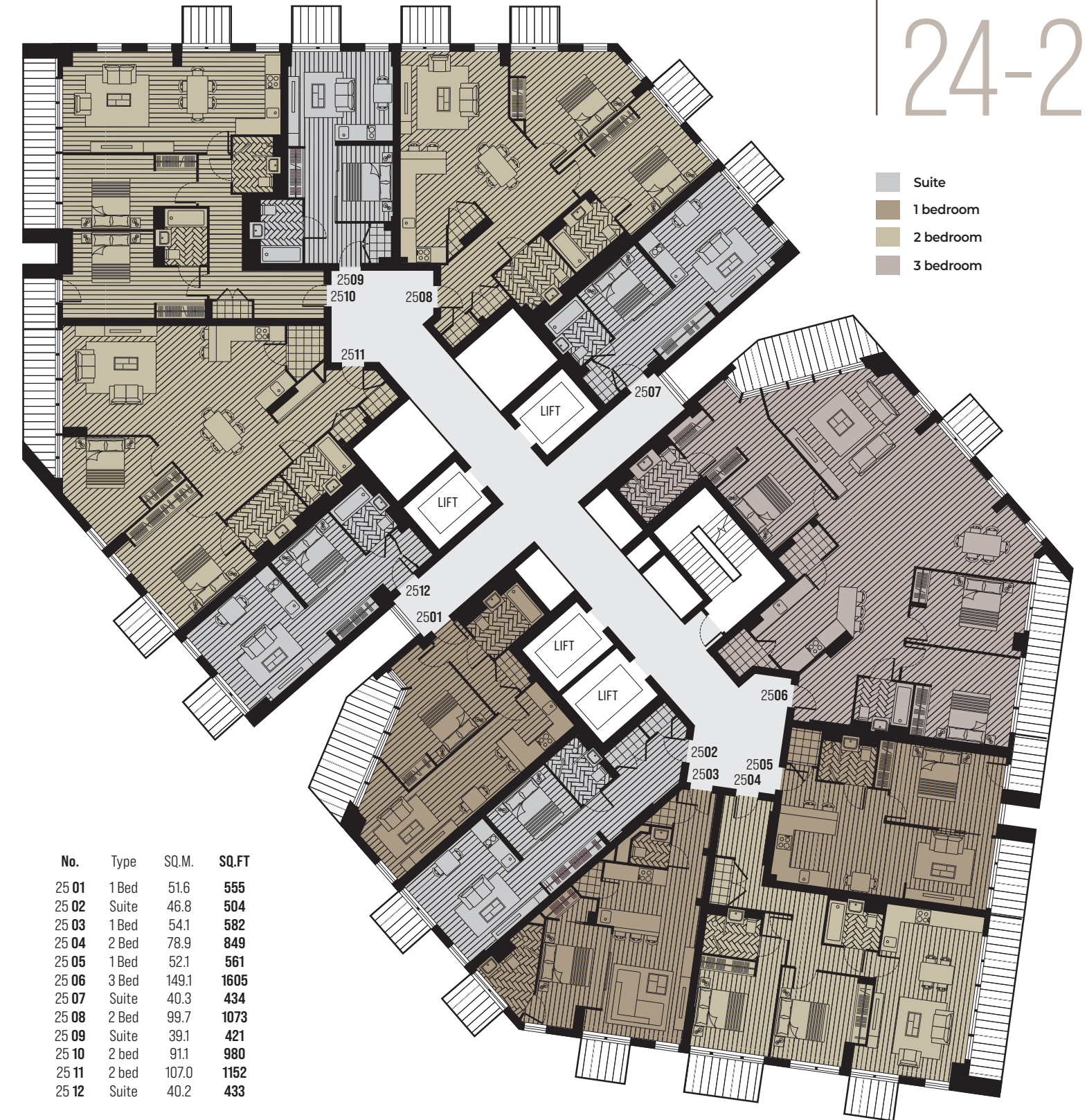
No.	Type	SQ.M.	SQ.FT
23 01	1 Bed	56.1	604
23 02	Suite	46.8	504
23 03	1 Bed	54.1	582
23 04	2 Bed	78.9	849
23 05	1 Bed	52.1	561
23 06	3 Bed	153.6	1653
23 07	Suite	40.3	434
23 08	2 Bed	99.7	1073
23 09	Suite	39.1	421
23 10	2 bed	91.1	980
23 11	2 bed	107.0	1152
23 12	Suite	40.2	433

Apartment layouts are intended to be correct, precise details may vary, furniture shown for illustrative purposes only. Total areas are accurate to within 5%.

24-25



No.	Type	SQ.M.	SQ.FT
24 01	1 Bed	53.9	580
24 02	Suite	46.8	504
24 03	1 Bed	54.1	582
24 04	2 Bed	78.9	849
24 05	1 Bed	52.1	561
24 06	3 Bed	151.2	1627
24 07	Suite	40.3	434
24 08	2 Bed	99.7	1073
24 09	Suite	39.1	421
24 10	2 bed	91.1	980
24 11	2 bed	107.0	1152
24 12	Suite	40.2	433

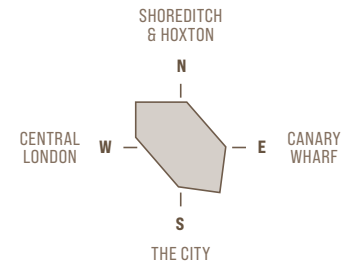


No.	Type	SQ.M.	SQ.FT
25 01	1 Bed	51.6	555
25 02	Suite	46.8	504
25 03	1 Bed	54.1	582
25 04	2 Bed	78.9	849
25 05	1 Bed	52.1	561
25 06	3 Bed	149.1	1605
25 07	Suite	40.3	434
25 08	2 Bed	99.7	1073
25 09	Suite	39.1	421
25 10	2 bed	91.1	980
25 11	2 bed	107.0	1152
25 12	Suite	40.2	433

- Suite
- 1 bedroom
- 2 bedroom
- 3 bedroom

Apartment layouts are intended to be correct, precise details may vary, furniture shown for illustrative purposes only. Total areas are accurate to within 5%.

26-27



No.	Type	SQ.M.	SQ.FT
26 01	3 Bed	155.8	1677
26 02	3 Bed	134.5	1448
26 03	3 Bed	146.7	1579
26 04	Suite	40.3	434
26 05	2 Bed	99.7	1073
26 06	1 Bed	53.0	570
26 07	1 Bed	77.1	830
26 08	2 Bed	107.0	1152
26 09	Suite	40.2	433

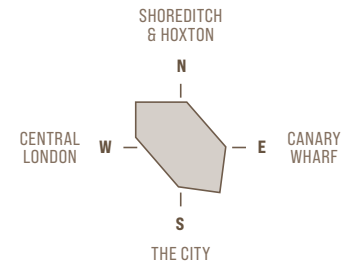


No.	Type	SQ.M.	SQ.FT
27 01	3 Bed	153.7	1654
27 02	3 Bed	134.5	1448
27 03	3 Bed	144.2	1552
27 04	Suite	40.3	434
27 05	2 Bed	99.7	1073
27 06	1 Bed	53.0	570
27 07	1 Bed	77.1	830
27 08	2 Bed	107.0	1152
27 09	Suite	40.2	433

- Suite
- 1 bedroom
- 2 bedroom
- 3 bedroom

Apartment layouts are intended to be correct, precise details may vary, furniture shown for illustrative purposes only. Total areas are accurate to within 5%.

28-29



No.	Type	SQ.M.	SQ.FT
28 01	3 Bed	151.7	1633
28 02	3 Bed	134.5	1448
28 03	3 Bed	142.6	1535
28 04	Suite	40.3	434
28 05	2 Bed	99.7	1073
28 06	1 Bed	53.0	570
28 07	1 Bed	77.1	830
28 08	2 Bed	107.0	1152
28 09	Suite	40.2	433



No.	Type	SQ.M.	SQ.FT
29 01	3 Bed	149.8	1612
29 02	3 Bed	134.5	1448
29 03	3 Bed	140.3	1510
29 04	Suite	40.5	436
29 05	2 Bed	100.2	1078
29 06	3 Bed	133.7	1439
29 07	2 Bed	107.3	1155
29 08	Suite	40.2	433

- Suite
- 1 bedroom
- 2 bedroom
- 3 bedroom

Apartment layouts are intended to be correct, precise details may vary, furniture shown for illustrative purposes only. Total areas are accurate to within 5%.



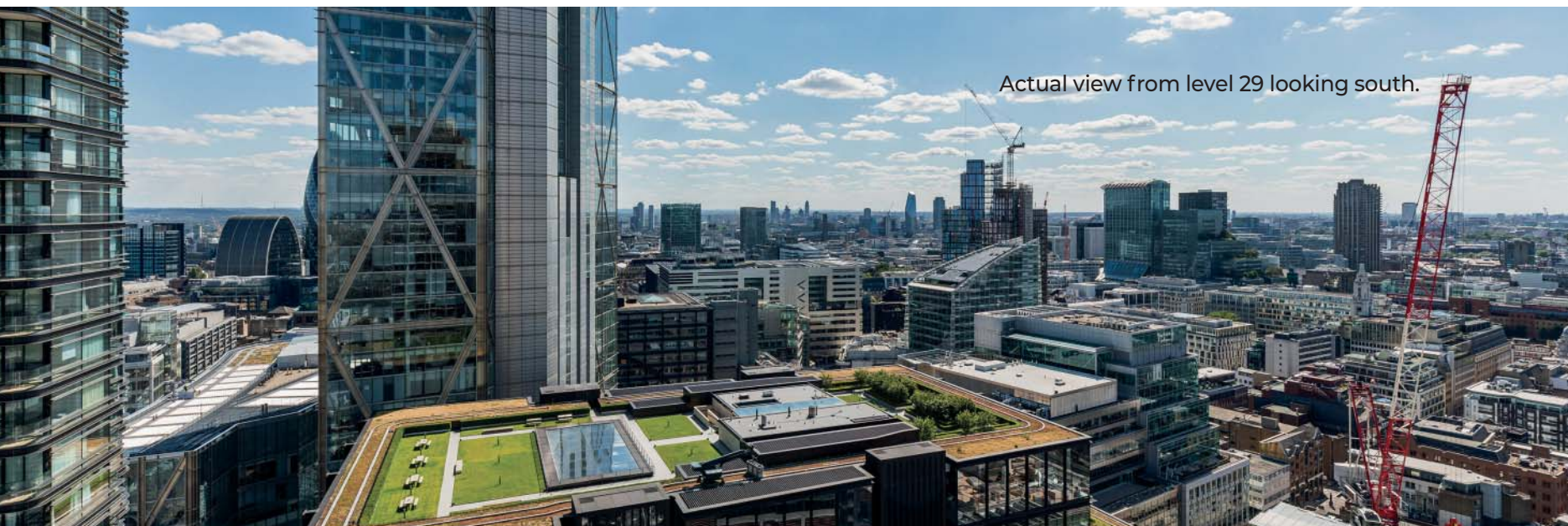
Actual view from level 29 looking west.



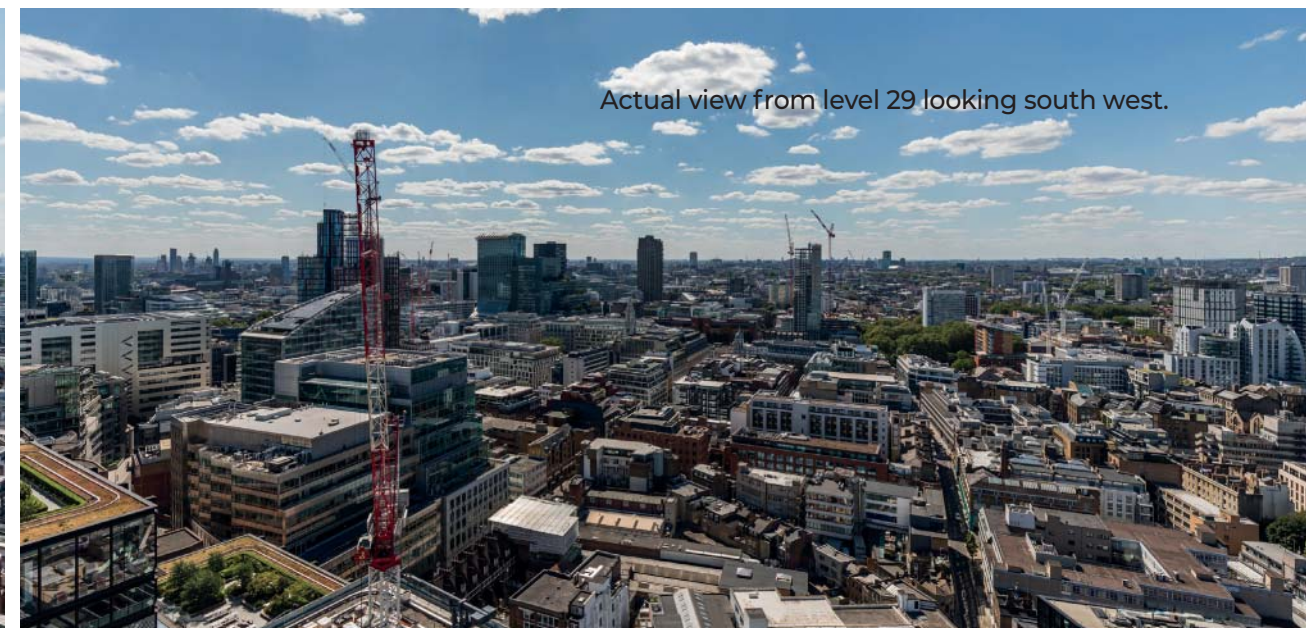
Actual view from level 29 looking north west.



Actual view from level 29 looking east.



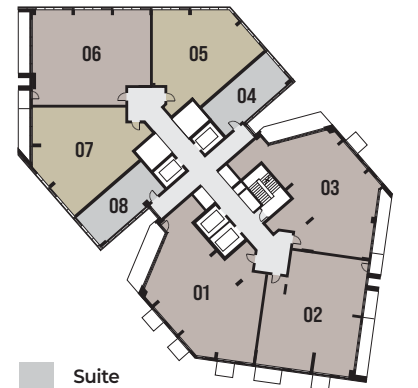
Actual view from level 29 looking south.



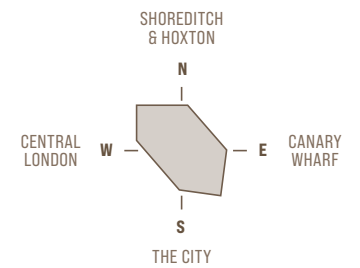
Actual view from level 29 looking south west.

28-29

APARTMENT VIEWS

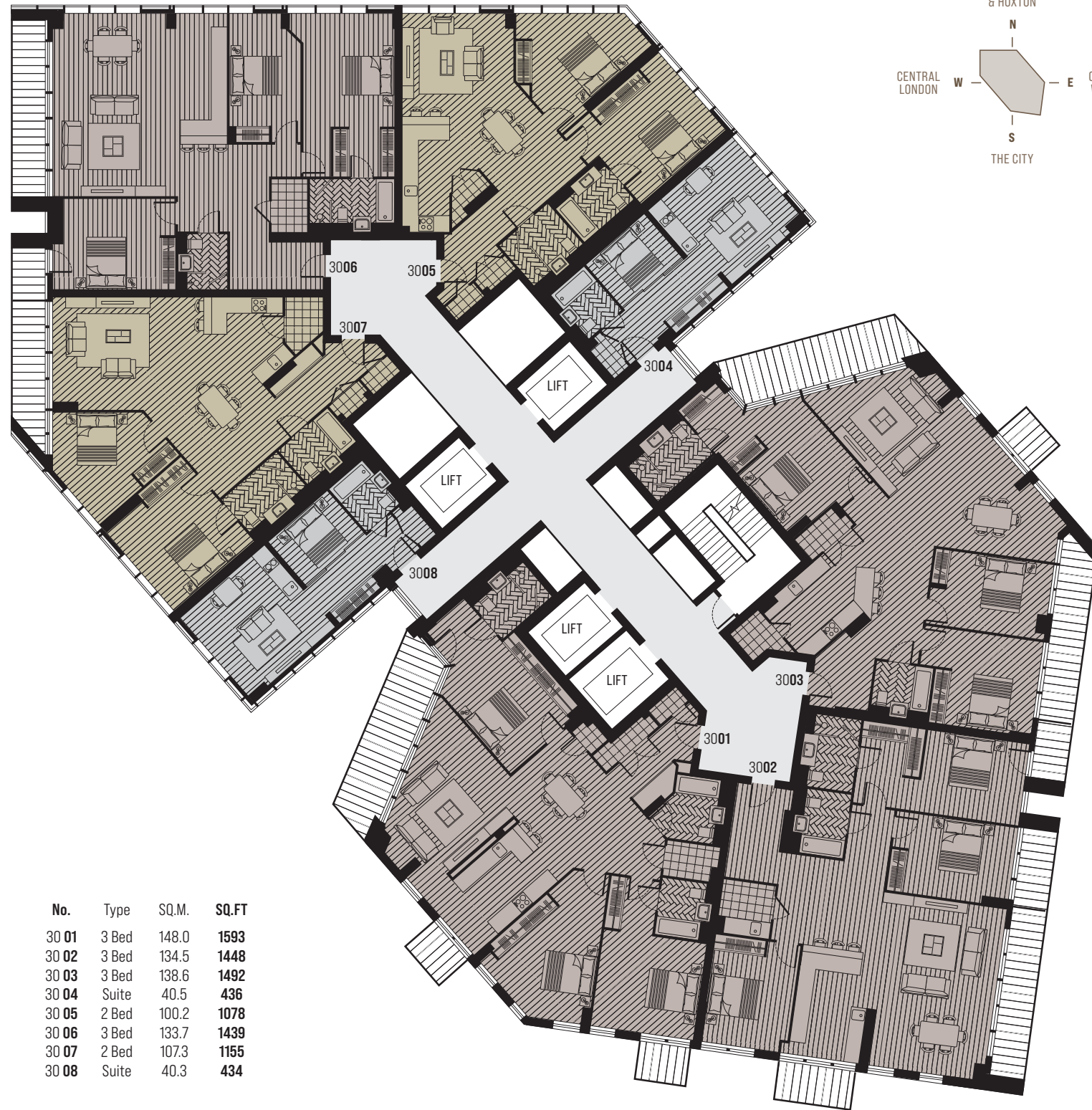
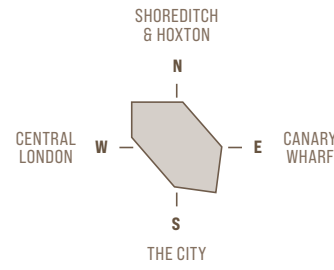


- Suite
- 2 bedroom
- 3 bedroom



These views from level 29 will be shared by all apartments from levels 25 to 30 - where residents' can take in the Capital's vast cityscape and ever changing aspects from sunrise to sunset.

30-31



No.	Type	SQ.M.	SQ.FT
30 01	3 Bed	148.0	1593
30 02	3 Bed	134.5	1448
30 03	3 Bed	138.6	1492
30 04	Suite	40.5	436
30 05	2 Bed	100.2	1078
30 06	3 Bed	133.7	1439
30 07	2 Bed	107.3	1155
30 08	Suite	40.3	434

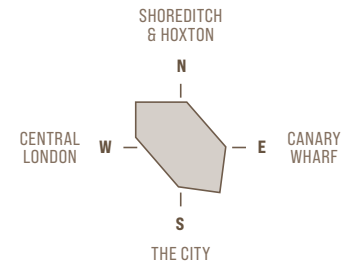


No.	Type	SQ.M.	SQ.FT
31 01	3 Bed	145.8	1569
31 02	3 Bed	134.5	1448
31 03	3 Bed	136.6	1470
31 04	Suite	40.5	436
31 05	2 Bed	100.2	1078
31 06	3 Bed	133.7	1439
31 07	2 Bed	107.3	1155
31 08	Suite	40.2	433

- Suite
- 1 bedroom
- 2 bedroom
- 3 bedroom

Apartment layouts are intended to be correct, precise details may vary, furniture shown for illustrative purposes only. Total areas are accurate to within 5%.

32-33



No.	Type	SQ.M.	SQ.FT
32 01	3 Bed	143.9	1549
32 02	3 Bed	134.5	1448
32 03	3 Bed	131.0	1410

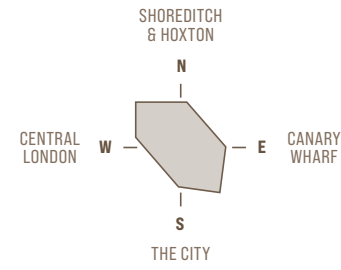
Apartment layouts are intended to be correct, precise details may vary, furniture shown for illustrative purposes only. Total areas are accurate to within 5%.



2 bedroom
3 bedroom

No.	Type	SQ.M.	SQ.FT
33 01	2 Bed	136.9	1473
33 02	3 Bed	134.5	1448
33 03	3 Bed	128.6	1384

34-35



2 bedroom
3 bedroom



No.	Type	SQ.M.	SQ.FT
34 01	2 Bed	132.4	1425
34 02	3 Bed	134.5	1448
34 03	2 Bed	125.7	1353



No.	Type	SQ.M.	SQ.FT
35 01	2 Bed	125.8	1354
35 02	3 Bed	134.5	1448
35 03	2 Bed	116.1	1250

Apartment layouts are intended to be correct, precise details may vary, furniture shown for illustrative purposes only. Total areas are accurate to within 5%.

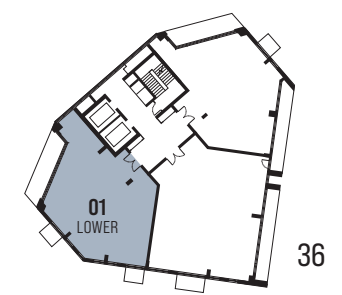
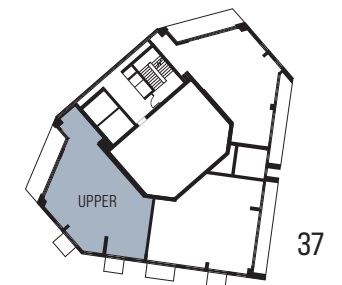
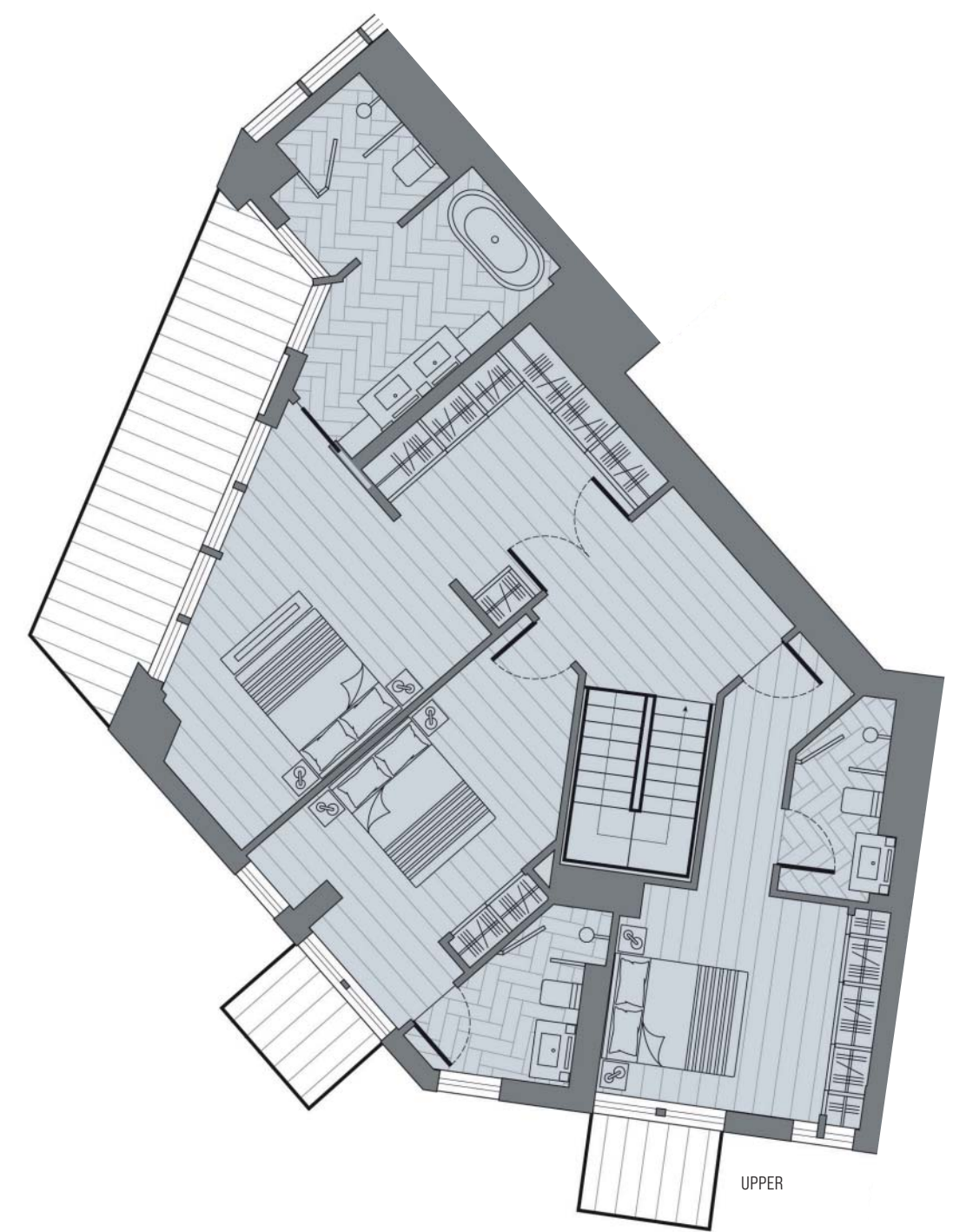
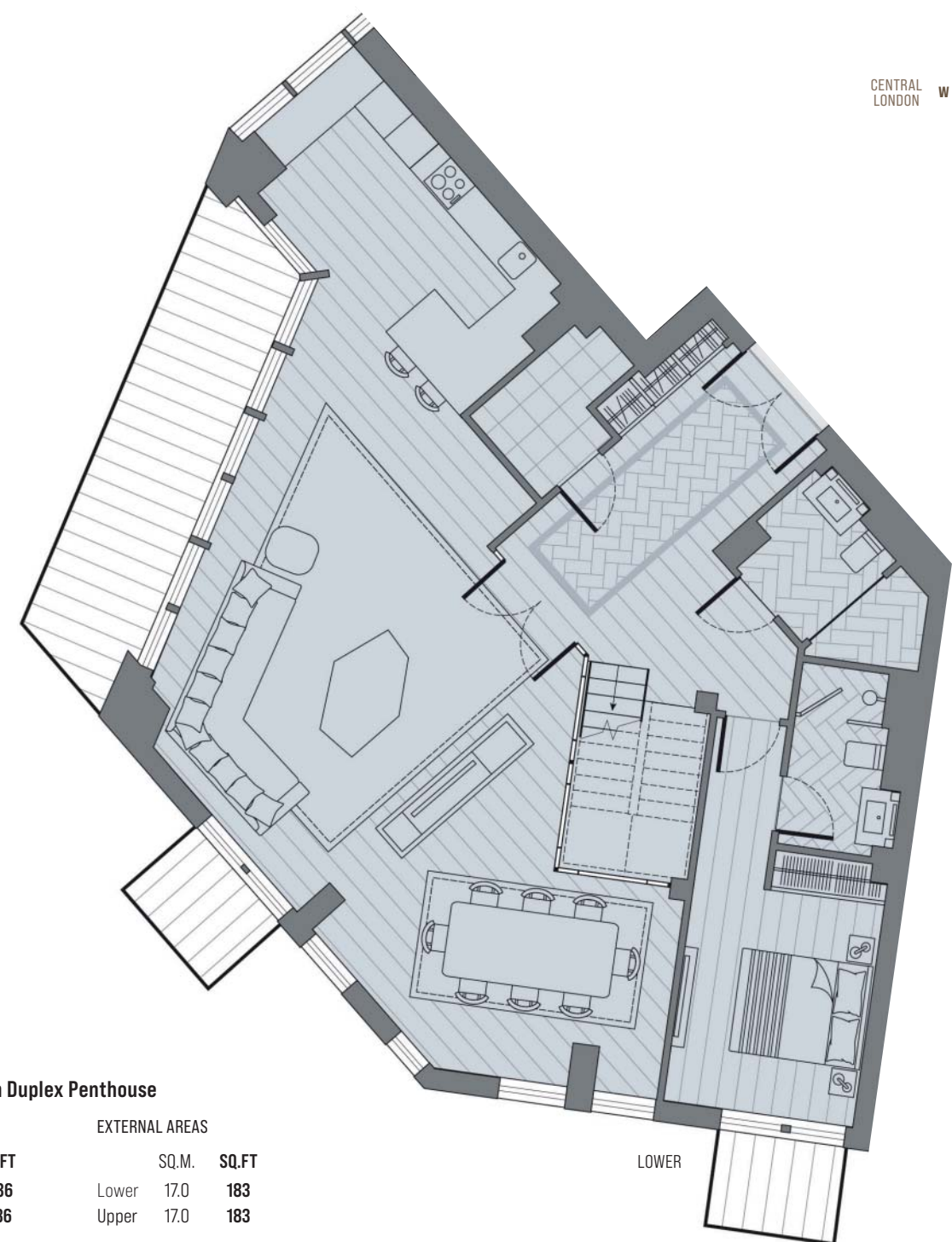
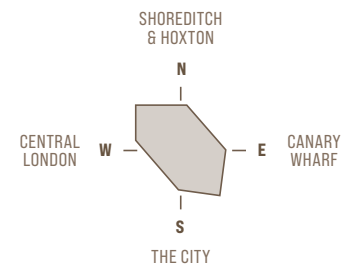
THE
STAGE.
EC2
SHOREDITCH

PENTHOUSE LEVELS 36-37



36-37

4 BED PENTHOUSE 3601



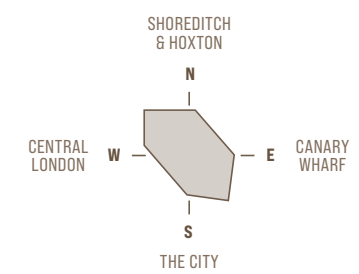
3601 4 Bedroom Duplex Penthouse

INTERNAL AREAS		EXTERNAL AREAS			
	SQ.M.	SQ.FT.			
Lower	124.1	1336	Lower	17.0	183
Upper	105.6	1136	Upper	17.0	183
TOTAL	229.7	2472	TOTAL	34.0	366

Apartment layouts are intended to be correct, precise details may vary, furniture shown for illustrative purposes only. Total areas are accurate to within 5%.

36-37

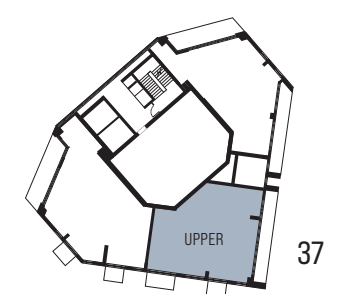
4 BED PENTHOUSE 3602



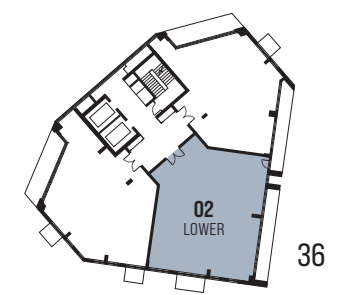
LOWER



UPPER



37



36

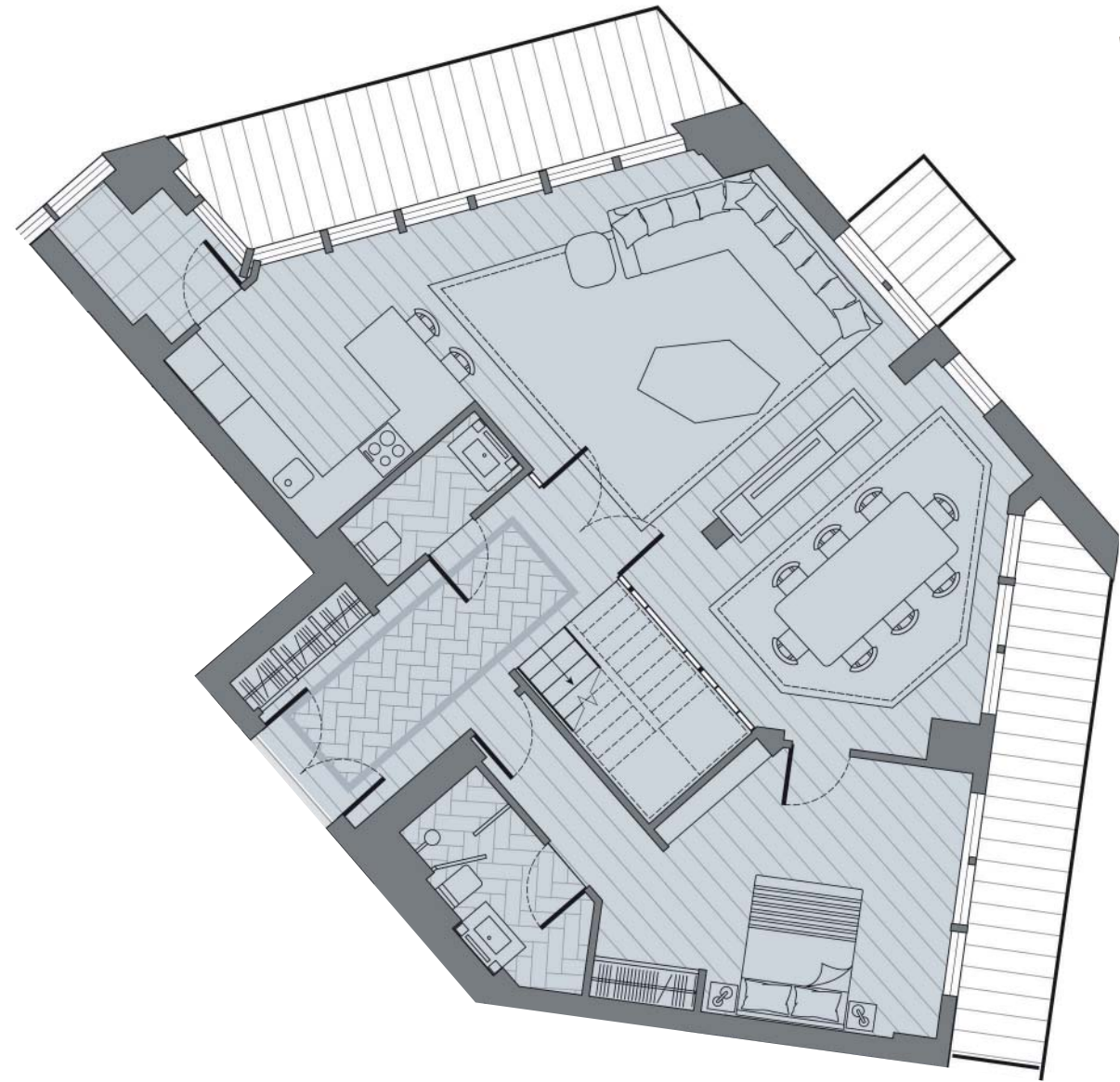
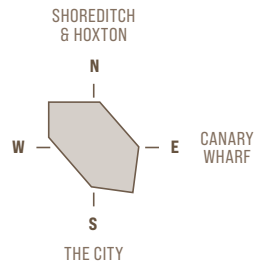
3602 4 Bedroom Duplex Penthouse

	INTERNAL AREAS		EXTERNAL AREAS	
	SQ.M.	SQ.FT	SQ.M.	SQ.FT
Lower	142.6	1535	18.4	198
Upper	94.2	1014	19.3	208
TOTAL	236.8	2549	37.7	406

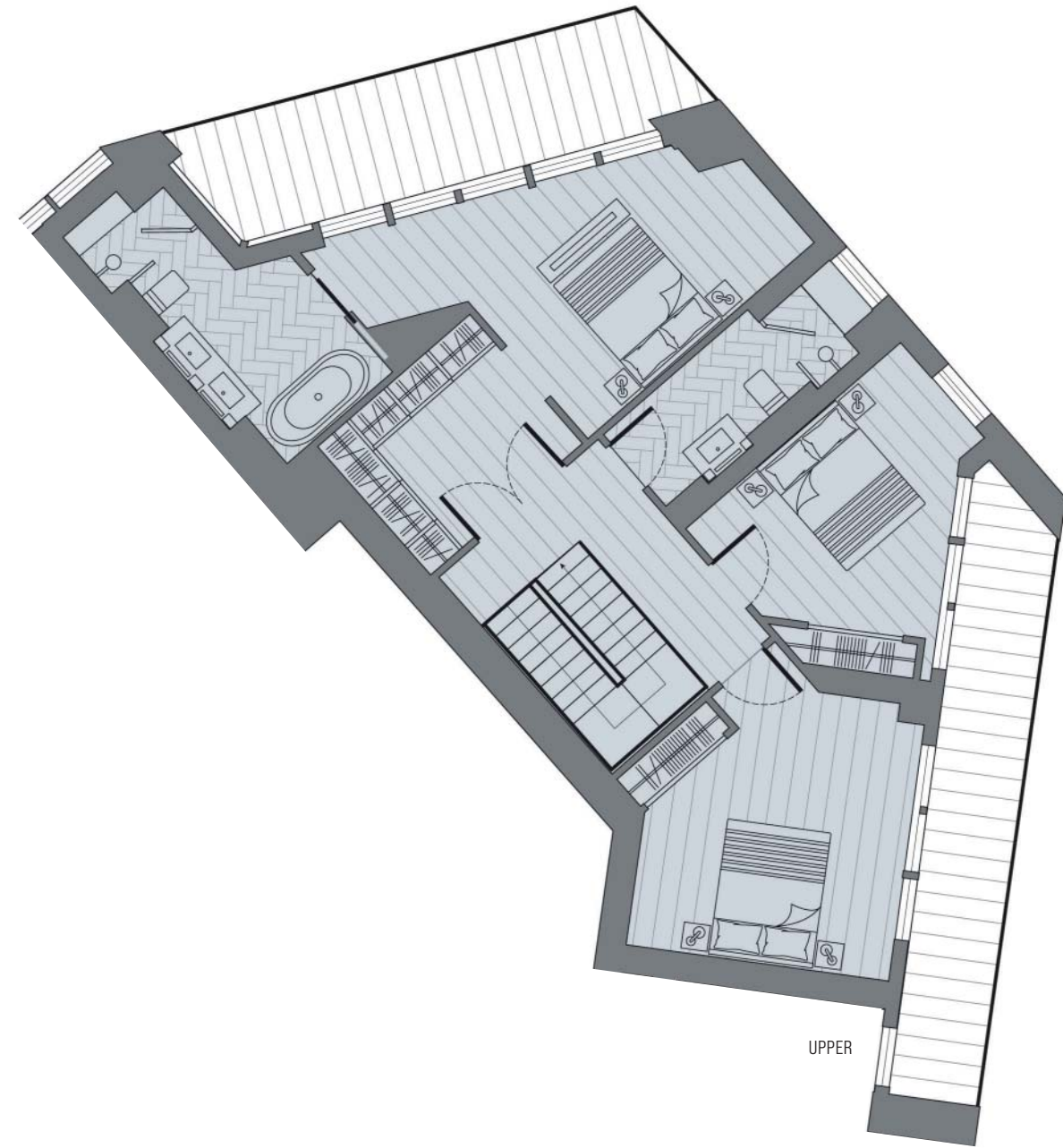
Apartment layouts are intended to be correct, precise details may vary, furniture shown for illustrative purposes only. Total areas are accurate to within 5%.

36-37

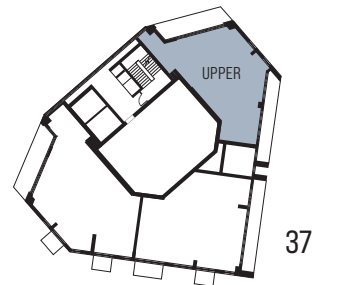
4 BED PENTHOUSE 3602



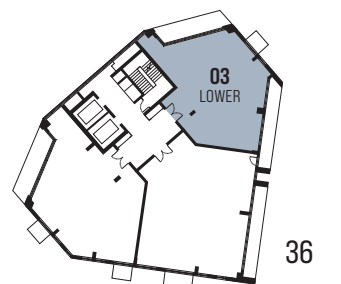
LOWER



UPPER



37



36

3603 4 Bedroom Duplex Penthouse

	INTERNAL AREAS		EXTERNAL AREAS	
	SQ.M.	SQ.FT	SQ.M.	SQ.FT
Lower	111.0	1195	21.0	226
Upper	89.6	964	24.0	258
TOTAL	200.6	2159	45.0	484

Apartment layouts are intended to be correct, precise details may vary, furniture shown for illustrative purposes only. Total areas are accurate to within 5%.

Actual view from level 36 looking west.

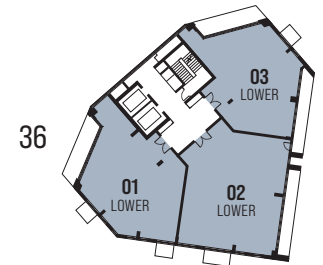
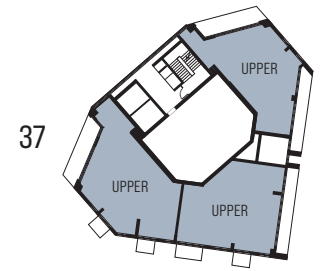


Actual view from level 36 looking east.

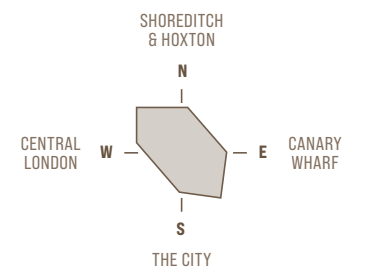


36-37

APARTMENT VIEWS



4 bedroom penthouse



With dual aspect balconies and terraces on both lower and upper duplex levels, each of the three magnificent penthouses will have the dramatic backdrop of the Capital's shimmering skyline to be enjoyed from each principal room or outside space.

The Stage is being developed by a UK and International group of companies with world leading resources and global expertise.

Image: View from The Stage penthouse level 36.



The largest privately owned residential developer in London with some 7000 homes currently under construction.



A global real estate investor with a property and development portfolio in excess of 3.2 billion and over 8000 homes across the UK, US and Europe.



McCourt Global is based in New York with offices in Los Angeles, London and Beijing. The company specialises in the investment and development of iconic schemes across the world.



The group is listed on both Fortune Global 500 and the Shenzhen Stock Exchange. It is also the largest real estate developer in China.



Based in the heart of Shoreditch itself, the company was responsible for the initial planning programme and early development process for The Stage.

THE
STAGE.
EC2
SHOREDITCH

**T H E
S T A
G E .
E C 2**
SHOREDITCH

**THE STAGE
SALES & MARKETING SUITE**

SHOW APARTMENTS OPEN FOR VIEWING BY APPOINTMENT

20 Curtain Road, London EC2A 3NG

020 3770 2154

thestageshoreditch.com



These particulars are compiled with care to give a fair description but we cannot guarantee their accuracy and they do not constitute an offer or contract. Galliard Homes reserve the right to alter any specifications and floor plan layouts without prior notice. All journey times stated are approximate, source tfl.gov.uk. Walking times taken from google.com. Exterior images of The Stage are computer generated and deemed to be accurate at time of going to print. Potential purchasers should satisfy themselves as to the actual view any apartment will provide. The health and leisure facilities shown in this brochure may be subject to change by any operator or third party undertaking the management branding of the facility space. The Stage is a preferred marketing name only.

V3 April 2023

